

# SENTINEL

APRIL 2011

## Summer Celebration Planned at P. Buckley Moss Museum



VOL. 25 NO. 2  
APRIL 2011

### MISSION STATEMENT

The Society's mission is to foster appreciation of the art of P. Buckley Moss, to promote charitable endeavors consistent with her ideals, and to promote the use of the arts in special education.

- 2 Summer Celebration Schedule
- 3 Chapter Training
- 4 Society Trip Update
- 5 Jigsaw Puzzles and Wine Glasses
- 6 Wet Paint
- 7 2011 Ornaments
- 8 Upcoming Shows and Collectors' Corner
- 9 Chapter Activities
- 10 Where Are They Now?
- 11 Foundation Ornament

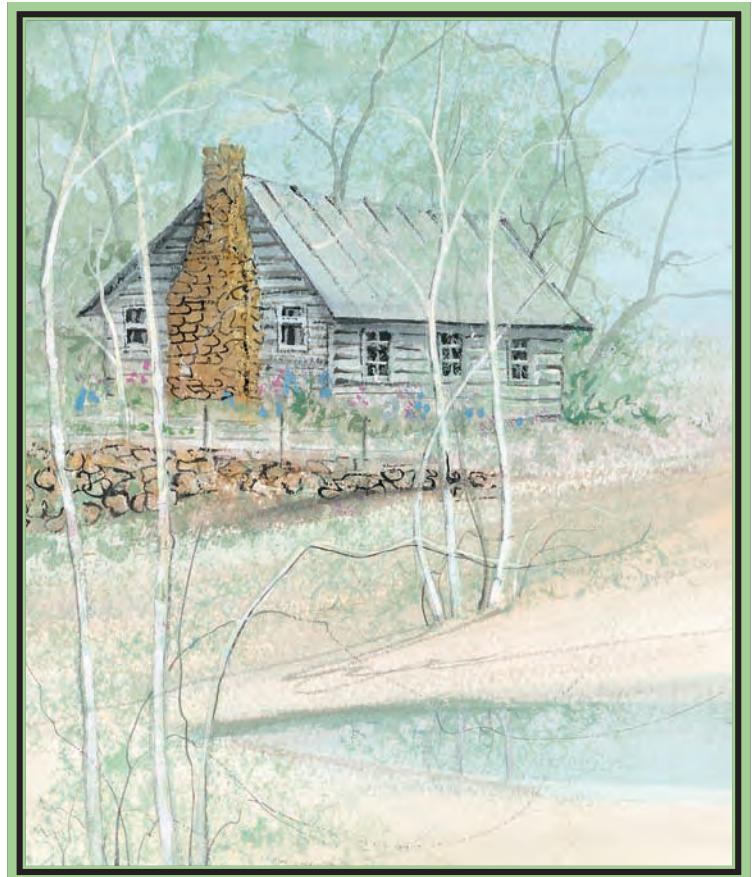
P. BUCKLEY MOSS GALLERIES, LTD., will host a Summer Celebration at Pat's museum in Waynesboro, Virginia, in conjunction with the July 8-10, 2011, Barn Show and Museum Open House. Friday night will kick-off the weekend's special events with a Wine & Cheese Meet & Greet in the Museum gift shop. Similar to a convention, Pat will be available to meet with all attendees in a relaxed, informal setting.

Society Chapter Training will be held on Saturday at the Museum, and the sessions will be free and open to the public. There will be a presentation on Pat's art, a session on the Society and its chapters, a session on the P. Buckley Moss Foundation for Children's Education, and other displays and sessions of interest to Moss collectors as well as a Dinner-Dance on Saturday night. The theme for the weekend is Mardi Gras in July. There is no charge for admission to the P. Buckley Moss Museum.



### LOCATION

P. Buckley Moss Museum  
150 P. Buckley Moss Drive  
Waynesboro, VA 22980  
1-800-343-8643 or 540-949-6473  
[www.pbuckleymoss.com/museum.html](http://www.pbuckleymoss.com/museum.html)



*Secret Hideaway is the special Summer Celebration show print. The accompanying plaque, pictured left, is available with the purchase of the print.*

# Summer Celebration: Tentative Schedule of Events

## Friday, July 8

---

**10:00 a.m.:** Museum opens at its regular time.

**10:45 a.m.:** Tour and Luncheon.

Meet at the American Shakespeare Center in Staunton, Virginia, for a tour (starting at 11:00 a.m.) with Pat, followed by lunch. The American Shakespeare Center (ASC), located in Staunton, Virginia, recovers the joys and accessibility of Shakespeare's theatre, language, and humanity. The Center hosts an internationally acclaimed theatre company that performs Shakespeare's works under their original staging conditions; on a simple stage, without elaborate sets, and with the audience sharing the same light as the actors.

**2:00–5:00 p.m.:** Pat will be signing at The Barn.

**6:00–9:00 p.m.:** Wine and Cheese Reception at the P. Buckley Moss Museum Gift Shop. Pat will be signing at the museum.

## Saturday, July 9 (P. Buckley Moss Museum)

---

The Saturday program will start at 9:00 a.m. and run throughout the day, including the following presentations; times to be determined.

■ Welcome by Mary Lou McMillin, Chair of the Society's Advisory Council, and "What's New with Moss"

■ Moss Art Presentation by Bonnie Stump, Museum Curator

**12:00-1:00 p.m.:** Lunch

■ P. Buckley Moss Foundation Presentation and Tour of the Foundation Office

■ Framing—Mary Kay Van Hooser, owner of Mint Spring Frame Shop & Gallery in Staunton, VA, will discuss the best way to frame and display Pat's art. She will talk about the principles of framing design and the use of correct materials.

■ P. Buckley Moss Society Presentation on Member Benefits and Chapters and What They Do—Learn all about the good works done by Society chapters and how they change the lives of many people through a shared love of Pat's art.

**4:30 p.m.:** Program Concludes

**6:30 p.m.:** Dinner-Dance

The Dinner-Dance will take place outside the Museum under a tent. Similar to a convention, there will be live and silent auctions and dancing. The P. Buckley Moss Society is sponsoring the Dinner-Dance, which will have a Mardi Gras theme. This event will feature Mardi Gras Goodie Bags, which may be purchased for \$20 each. All the bags will contain donated gifts and P. Buckley Moss Gift Certificates. One lucky bag will contain a ticket for a free P. Buckley Moss miniature watercolor. Proceeds from the Dinner-Dance and auctions will be donated to the P. Buckley Moss Foundation for Children's Education.

## Sunday, July 10

---

**11:00 a.m.-5:00 p.m.:** Regular hours for Museum Open House and Pat's signing at The Barn.

### Tickets

**Admission to the Barn Show and Day Events:** Admission to the Museum and Barn is always free. All special activities (except Friday's tour and lunch, the Friday night reception, and Saturday night's Dinner-Dance at the Museum), including Chapter Training, are free and open to the public.

**Friday tour of the American Shakespeare Center and lunch: \$20 per person**

**Friday night reception tickets: \$8 in advance, \$12 at the door**

**Saturday evening Dinner-Dance: \$40 per person**

*To purchase tickets for any or all of the above events, please contact P. Buckley Moss Galleries, Ltd., at 1-800-430-1320.*

**The deadline to purchase all tickets is June 30.**

## 2011 Chapter Training to Coincide with Summer Celebration

This year's Chapter Training will be held on Saturday, July 9, at the P. Buckley Moss Museum in Waynesboro, Virginia, in conjunction with the Museum's Summer Celebration. The day will begin at 8:30 a.m. with registration and a light breakfast, which will be provided. In addition to the activities outlined in this issue's article about the Summer Celebration event, there will be a "Grillin' on the Grounds" Picnic for participating chapter members. The cost for breakfast and lunch is \$10.

The plans for Chapter Training are in the very capable hands of the Society's new Chapter Chairperson Shirley Collins. You may remember reading about Shirley in the October, 2010, issue of *The Sentinel* when she was awarded the Society's Presidents' Award for 2010. Shirley is the president of Pat's Blue Goose Chapter in Mineral, Virginia. Under her leadership (since 2005), chapter members have raised nearly \$50,000 for families in need in their area. Most of the families have a very sick child and are facing overwhelming medical bills.

More detailed information about Chapter Training, including contact information for area hotels and their rates, will be mailed to chapter presidents and secretaries. In the meantime, Shirley is asking that chapters be prepared to bring the following with them to Chapter Training:

■ **Chapter Display**—No larger than ½ of an 8-foot table. Feel free to bring samples of your chapter newsletters. Your display can include photos of events and meetings and information about your projects.

■ **Raffle Tickets**—If your chapter is currently involved with a raffle, you may bring advertisements and raffle tickets to sell. There will be a time for all chapters to sell tickets during Chapter Training. Remember to bring address labels to make purchasing tickets faster and easier for you!

■ **Questions/Comments/Ideas**—At one of the small group sessions, there will be a Society representative on hand to address any questions, comments, and ideas your chapter may have. It might be helpful to have them written down ahead of time. If you have time, please go ahead and send your questions and ideas to Shirley or to the Society office so we can better prepare for the session.

■ **Raffle Gift**—Each chapter should bring a gift in a gift bag as part of our Saturday evening raffle for the Moss Foundation. The item may be hand-made or something representative of your chapter or your area. Please do not spend over \$25, and do remember some people may have limited space when going back home. Include a card inside the bag telling whom the gift is from and anything special about the gift. We are asking that you use a gift bag, as you will be showing the gift to the group during Chapter Training.

■ **Mardi Gras Bags**—Shirley would like the chapters to help fill 60 bags. They will be sold for \$20 each, and the proceeds will go to the Foundation. One of the bags will have a card indicating the winner of an original watercolor by Pat. The bags will be sold at the Dinner-Dance on Saturday night.

■ **Decorations to Decorate Mardi Gras Masks**—Each chapter represented will be given masks to decorate. The masks will be used as centerpieces for the tables at the Dinner-Dance Saturday night. Those attending the Dinner-Dance will be given an opportunity to bid (silent auction) on the masks.

Please mark your calendars and come prepared to have fun! In the meantime, if you have any questions please feel free to contact Shirley: Shirley E. Collins, 20 Elk Ct., Mineral, VA 23117; PH: 540-872-0294; e-mail: budnshirlw4@ntelos.net.

### Remember When?

Do you remember where and when these photos were taken at a Society chapter training? Email us your answer to [society@mossociety.org](mailto:society@mossociety.org). There is a \$25 gift certificate for use on [www.pbuckleymoss.com](http://www.pbuckleymoss.com) for the person who has the correct answer and can name the most participants in the photos. The winner will be picked at random from all correct answers on June 15th.





## Letter from Pat

Dear Friends,

Spring has sprung! The birds are building nests and singing, and the trees and flowers are blooming. It's such fun to feel the warmth of the sun and see everything waking up and coming to life again after a long winter's nap. With the disaster in Japan and the turmoil in the Middle East, it's reassuring and grounding to know that there are constants in life like the changing of the seasons and the promise that it brings.

We are planning a wonderful Summer Celebration weekend for July 8-10 at my museum in Waynesboro, Virginia. There's a whole article about it elsewhere in this issue that you can read for details, but it will combine elements of a Museum Open House and Barn Show, Chapter Training, and a Collectors' Convention. The theme will be Mardi Gras in July, and I know it will be a ball. Grab your beads and your masks and join us!

Love,

## 2011 Society Trip Update

The 2011 Society trip to northern Italy is shaping up to be great fun. Itinerary details may be viewed on the Society's website at the following link: <http://www.mossociety.org/2011societytrip.pdf> (or see contact information below for Group Leader Mariann Peterson and Pella Travel). Plans include arriving in Milan on September 1 and returning home via Milan MXP Airport on September 12. Activities will include sightseeing with a tour guide, opportunities to explore on your own, and even a cooking class! Participants will enjoy time in the Emilia Romagna, Cinque Terre, and Lake Regions.

Continental breakfast is included each day, plus five evening meals with wine, and a lunch. The cost of the trip package is \$2,675 per person, based on two people per room. This price does NOT include airfare. Group rates for airfare may be available if there are several people leaving from the same airport. A non-refundable deposit of \$500 is due upon registering for the trip, with full payment due prior to June 20, 2011.

To sign up for the trip or obtain more information, please contact either Sue at Pella Travel at 1-800-732-9405 or Mariann Peterson at 515-314-3619 or [mariann@netins.net](mailto:mariann@netins.net).

## Update on the 2011 Renewal Brooches

We have seen the second proofs of the 2011 adult and junior membership brooches and are making refinements to them. This year's adult brooch is shaping up to be exceptionally beautiful, with raised areas in bas relief around the vase and the lily petals. We anticipate starting to ship the brooches by June 15.

## Recipes for Touching Lives Cookbook has Sold Out!

The *Recipes for Touching Lives* Cookbook has been a huge success, selling out in fact! We have looked into the possibility of running a smaller, second printing of the cookbook. The second edition would retail for \$38, and we would need to have reservations ahead of time for at least 500 books. If you are interested in purchasing the cookbook at the new price, please let us know by June 15.



# Jigsaw Puzzles

P. Buckley Moss Galleries, Ltd., has started development of three new jigsaw puzzles. Previously, Pat licensed her artwork through puzzle maker Ceaco. These puzzles are the first to be designed and distributed through P. Buckley Moss Galleries, Ltd. The puzzles will begin distribution around September 1 and will be available to members and non-members alike at a retail price of \$24.

Because we are making these puzzles ourselves we do not have to alter the images to conform to a standard size. You will notice that each puzzle has its own unique dimensions.



*Walkway*  
20 x 16 ins.  
500 pieces



*Spring Quilt Show*  
12 x 24 ins.  
510 pieces



*United in Faith*  
15 x 21 ins.  
500 pieces

Preorder your puzzles and wine glasses and save \$2. If you place your order by June 1, 2011, pay only \$22 per puzzle and \$38 per set of wine glasses. Place your order with your local Moss Gallery or P. Buckley Moss Galleries, Ltd. (800-430-1320).

# P. Buckley Moss Society Wine Glasses

This handsome set of four P. Buckley Moss Society wine glasses comes with one of four favorite P. Buckley Moss images printed on the front; horses, cats, geese, and a Moss tree. Try these at a party, where they will be the talking point—and useful wine glass identifiers, too.

Available to Society members only as a set for \$40, plus \$8 shipping. Please call 1-800-430-1320 to place your order.



*Horses*



*Cats*



*Geese*



*Tree*

# Wet Paint

A regular column in which we feature new art and products by Pat. In this edition we take a look at new additions to Pat's expanding portfolio of wildlife subjects and introduce this year's ornaments.

In March, Pat painted these handsome and majestic lions to help raise funds for Big Cat Rescue in Tampa, Florida, a non-profit organization dedicated to providing a safe home for big cats rescued from abusive captivity.



*Poised Felines* \$100  
Giclée on Paper, Edition size 250  
IS: 13-7/8 x 10 ins.



*Gaze of the Greater Cats* \$150  
Giclée on Paper, Edition size 250  
IS: 11-1/2 x 16-3/4 ins.



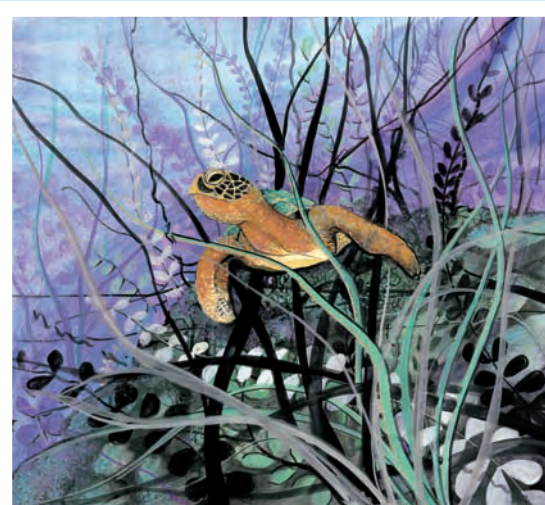
*Eastern Wood-Pewee* \$80  
Giclée on Paper, Edition size 250  
IS: 10 x 7 ins.

Adding to her collection of bird prints, Pat has painted the *Eastern Wood-Pewee*. Check out other bird prints such as the goldfinch trio online at [www.pbuckleymoss.com](http://www.pbuckleymoss.com) (fine art reproductions).

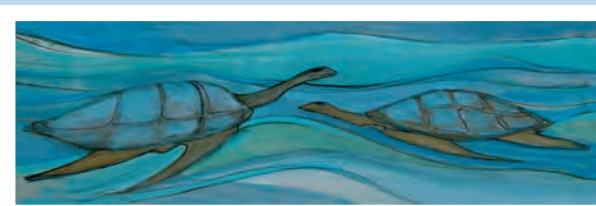
In *Deep Blue Sea*, Pat further explores the underwater world of our oceans she dove into in *Under the Sea* and *Turtle Play* with her depiction of dolphins. Dolphins join Pat's pantheon of symbols, embodying grace, playfulness, gentleness, harmony and intelligence. Dolphins in Christian art often represent resurrection and, because they live in the water yet breathe the air, symbolize harmony in duality.



*Deep Blue Sea* \$400  
Giclée on Paper, Edition size 250  
IS: 22 x 22 ins.



*Under the Sea* \$400  
Giclée on Paper, Edition size 250  
IS: 20 x 22 ins.



*Turtle Play* \$800  
Issued in 2005  
Giclée on canvas, stretched  
IS: 12 x 38 ins.  
Edition: 250 and 25 artist's proofs

# New Ornaments for 2011



O-H-I-O \$48



Kinnick Stadium \$48



Tree of Learning \$42



Colonial Winter \$42



Christmas Song \$42



Love and Joy \$42



John Deere Girl \$42



John Deere Boy \$42



Winter Companions \$42



Autumn in the Valley \$42



Winter at the Inn \$42



A Purrfect Ride \$42



Pit Stop \$48



Music on State Street \$42



Church Circle \$42



Roanoke Farmer's Market \$42



The Marketplace \$42

Available in September from P. Buckley Moss Galleries, Ltd. and your local Moss dealer.

## Upcoming Shows with Pat

Pat will appear at the following galleries during the next few months to meet her collectors and sign purchases of her work. These galleries will have an expanded inventory of prints and originals, and they work hard to make each event enjoyable. This schedule is subject to change at any time. Please call the galleries for show details.

**April 29-May 1** Waynesboro, VA  
Museum and Barn Open House  
(800) 343-8643

**May 21** Princeton, WV  
Frameworks Plus  
(304) 327-7111

**June 3-4** Roanoke, VA  
Graphics, Etc.  
(540) 982-8441

**July 2** Mathews, VA  
MAG-The Gallery  
(804) 725-3326

**July 8-10** Waynesboro, VA  
Summer Celebration  
(800) 343-8643

**Sept. 23-24** Berlin, OH  
Berlin Creek Gallery  
(330) 893-2686

**Oct. 1** Hanover, PA  
Martin's Gallery  
(717) 632-3355

**Oct. 7-9** Waynesboro, VA  
Museum and Barn Open House  
(800) 343-8643

**Oct. 14-15** Omaha, NE  
Ginger's Hang-Up  
(402) 391-6440

**Oct. 21-22** Waynesville, OH  
Canada Goose Gallery  
(513) 897-4348

**Oct. 28-29** Kalona, IA  
The Village Shoppe  
(319) 656-3853

**Nov. 4-5** Leesburg, VA  
Medlin Art, Ltd.  
(703) 771-8696

**Nov. 11-12** Ottumwa, IA  
M&J Art & Frame Gallery  
(641) 682-0434

**Nov. 18-20** St. Petersburg, FL  
Finn Gallery  
(727) 894-2899

**Dec. 2-4** Waynesboro, VA  
Museum and Barn Open House  
(800) 343-8643

## Upcoming Shows withOUT Pat

Although Pat will not be appearing at the following gallery shows, orders and purchases made at these events can include requests for special signatures and inscriptions of up to four words on prints. Galleries presenting Shows without Pat increase their print inventories and obtain original prints and watercolors for the show. This schedule is subject to change at any time. Please call the galleries for show details.

**April 30** Columbiana, OH  
Vivian's Antiques and Collectibles  
(330) 482-3144

**June 3-4** Story City, IA  
Country Gallery  
(515) 733-2262

**Nov. 4-6** Buchanan, VA  
Apple Barn Gallery  
(540) 254-6677

## Collectors' Corner

**FOR SALE:** *Mountain Homestead* (Explore Park), unframed, \$300. (540) 389-3769 or email: [jnl.helvey.jnl@verizon.net](mailto:jnl.helvey.jnl@verizon.net)

**FOR SALE:** Plate *Sunday Ride* in box with certificate, \$225; plate *Tender Hands* in box with certificate, \$225; renewal brooches 1990-2010 (except 2007) plus pewter geese pin in original boxes, never worn, \$600; set of Moss dolls *Hannah, Jacob, & Isaac*, numbered & in box with certificate, \$250; and Moss doll *Mary with Lamb* (doll and lamb), numbered & in box with certificate, \$225. (609) 398-6235 or email: [mmohr@aol.com](mailto:mmohr@aol.com)

**FOR SALE:** Professionally matted and framed lithograph of *Roanoke Farmer's Market*, signed by Pat. Best offer. 360-699-4697 or [cavanaghj@comcast.net](mailto:cavanaghj@comcast.net)

*For ad guidelines and to place an ad, please contact the Society office at 1-800-430-1320 or [society@mossociety.org](mailto:society@mossociety.org). The deadline for submitting ads for the July issue is June 1.*



# Chapters Continue Charity Efforts, Activities

**APPLESEEDS OF MOSS** Chapter's (Bellefontaine, OH) big project last year was called Christmas Jars. Chapter members saved and contributed over \$300 and used it to purchase Christmas gifts for seven residents of three nursing homes in the area who did not have any family to celebrate Christmas with. It was a very worthwhile and fulfilling project.

**FRIENDS MEETING** Chapter (Waynesville, OH) participated in and supported Waynesville's "Hands Across the Country, Denim and Pink Weekend" fight against breast cancer last October. There were a number of events during October 20-23, including a fundraising dinner to benefit the Greene County Chapter (known as Greenebucs) of National AMBUCS™, Inc. AMBUCS is a national non-profit service organization dedicated to creating mobility and independence for children and adults with disabilities through the provision of AmTryke® therapeutic tricycles. Other events included a candlelight vigil in support of breast cancer survivors, patients, and victims; a Walk with Moss (Pat was in town for the events and had a show with Canada Goose Gallery; chapter members also assisted with the show); and a Pig Roast and Live and Silent Auction at Keepin' It Country Farm. Beneficiaries of the fundraising events included Greenebucs, Pals for Life Breast Cancer Support Group, and the P. Buckley Moss Foundation for Children's Education. One of the items auctioned was a beautiful quilt created around one of Pat's hand-painted fabric centerpieces, which brought \$4,000.

Proceeds from the quilt were split between Greenebucs and the Moss Foundation.

Chapter members also made lap quilts for a mission network based in Pennsylvania and knitted squares for Warm Up America last year.

**MOSS IN THE MOUNTAINS** Chapter (Princeton, WV) is a newly formed chapter, and its members are raring to go! If you live in the Bluefield/Princeton area and would like to know more about the group, please contact Chapter President Angie McCall at 304-320-8998 or amccall@4seasonswireless.net.

**THREE RIVERS MOSS** Chapter (Pittsburgh, PA) has chosen to support the Three Rivers Adoption Council this year. The Chapter will host an open

**Total raised for charity in these chapter reports is well over \$4,300!**

house and tea at Vice President Claudia McClelland's home in May, which will provide an opportunity for the Three Rivers Adoption Council board members and staff to view some of Pat's art as well as meet chapter members. The Chapter is donating a framed, remarked Spring at Home to the Adoption Council for them to raffle. For more information on the raffle, please contact Lindsay Totten at the Three Rivers Adoption Council, 412-471-8722 or ltotten@3riversadopt.org.



*The Three Rivers Moss Chapter was founded twenty-three years ago.*

## Reminder to Update Your Information

Moving? New phone number or e-mail address? New credit card or expiration date? Please remember to let us know when your contact information has changed. For your convenience, all you

need to do is correct any pertinent information on your renewal notice and send it back to us with your payment when you renew your membership. If you are signed up for automatic renewal via credit

card, please remember to let us know whenever you change credit cards or get a new expiration date. Updating your information will help us serve you better.

# Follow Pat on Facebook

Did you know that you can now follow Pat on Facebook? There is a "P. Buckley Moss Fan Club" page and a "P. Buckley Moss Galleries" page. We anticipate that the fan club page will evolve into the social page and the P. Buckley Moss Galleries page into more of a product-oriented page. We hope you will feel free to comment on the Fan Club page about Society activities, chapter endeavors, Pat Moss stories, etc. On the Galleries page, we will post the latest prints and give advance notice of future products, gallery shows, etc.



## Where Are They Now?

We like to periodically update readers on the lives of past Harbison and Cary scholarship winners. Here are a few for you to enjoy.

**KELLEY REEVES** was the 2007 Harbison Scholarship winner: "I'm currently a senior at Virginia Tech and will be graduating in May. It's hard to believe that four years of college have passed so quickly! My major is Apparel Design & Merchandising Management and I am currently applying for positions within this career field. My hope is to become a Buyer or a Sales Rep for a large clothing corporation.

"I've been blessed with opportunities to develop job-related skills through two internships. I worked as an intern for a local buyer that purchases for three privately owned retail stores. I was also fortunate enough to be hired by Victoria's Secret as a marketing intern on Tech's campus for their PINK Collegiate line of clothing. I spent three days at their headquarters in Columbus, Ohio training for this position. My junior year I spent a week in New York visiting and observing in a number of apparel-related companies. These experiences have not only confirmed my career choice, but provided much insight into this career path.

"Again, I thank the Moss Foundation for providing me with \$1500 each year to help with the cost of tuition. Being chosen was an honor knowing that your organization believed, as I do, that I could be successful despite being dyslexic. I've had to work harder, study

longer, face obstacles with accommodations, etc. yet I have done exactly what I intended to do...graduate from Virginia Tech!"

**BRANDY REEVES** (unrelated to Kelley) was the 2007 Cary Scholarship winner: "Since finishing my degree from the University of New Hampshire in Special and Elementary Education I returned to my home state of Alaska to teach. I am now in my third year of teaching and still feel like I am learning new things each and every day. My first two years were spent teaching special education at Hutchinson High School.

"Hutchinson is a charter career technological high school of 400 students. I was the sole special educator in the building and spent my time going into the classrooms assisting students in accessing the regular education curriculum and assisting teachers in learning how to best include students with special needs in their classroom. During my time at Hutchinson I helped an algebra teacher implement a differentiated instruction center based approach in her classroom and also applied and won a grant to get alternative seating (physio balls) for the students in the class.

"I have since moved on to teaching 5th grade in a fully inclusive classroom at Hunter Elementary, a title one school in Fairbanks. However, I still tutor at Hutchinson and run a reading group for my high school students in the summer. I am loving the experience of having my own classroom and getting to work cooperatively with the special education

professionals at my school. My training in special education has allowed me to help the [students] on IEPs stay in my class and better access the regular education curriculum without the need for as much pull out services. I know that my training in special education has made me a better classroom teacher for both [students] with and without exceptional [needs].

"I am still as in love with being a teacher as I was three years ago and truly appreciate the assistance the Cary Scholarship and the P. Buckley Moss Society has given me in getting me to where I am today."

**MUNEERA FONTAINE** was the 2009 Cary Scholarship winner: "Wow! So much has happened since I received the 2009 Cary Scholarship. I actually became extremely sick that year with a severe blood infection that attacked my organs and I had to leave my doctoral program. I took a year off to heal and I'm happy to report my health is almost back to 100%! In the process I also relocated from Texas back to Washington, DC to be closer to my family and I am now enrolled in George Washington University's Bilingual Special Education PhD program. I am also working as a tutor to prevent at-risk children from qualifying for special education and as a one-on-one aide for a 7 year old boy with a traumatic brain injury. I was so honored to have received the Cary scholarship and the many people who went out of their way to offer to nominate me. I am truly grateful!"



## P. BUCKLEY MOSS SOCIETY NEW MEMBERSHIP APPLICATION

The Moss Society performs charity work on behalf of the artist, focusing on children's charities. The box on the right should list the information on the Society member who will receive credit for recruiting you. Please add \$5 a year for foreign members.

**CHECK ONE:** \_\_\_\_\_ New Adult Membership \$38  
 \_\_\_\_\_ New Senior Membership \$33 (65 or older)  
 \_\_\_\_\_ New Junior Membership \$28 (for children ages 17 and under)

Name of Member: \_\_\_\_\_ Date: \_\_\_\_\_

Address: \_\_\_\_\_

City: \_\_\_\_\_ State: \_\_\_\_\_ Zip: \_\_\_\_\_

\_\_\_\_\_ Please donate \$1 of my membership dues to the Foundation. \_\_\_\_\_ No, thank you.

**PAYMENT TYPE:** Check | Credit Card  
 (Please circle one.)

VISA/MC/Discover No: \_\_\_\_\_ Exp. Date: \_\_\_\_\_

Signature: \_\_\_\_\_

Check No: \_\_\_\_\_ TOTAL \$: \_\_\_\_\_

**For new memberships only; if you wish to renew, please use the form on the back.**

### RECRUITER INFORMATION

Recruiter Name: \_\_\_\_\_

Recruiter Membership #: \_\_\_\_\_

Telephone: (\_\_\_\_\_) \_\_\_\_\_

Email: \_\_\_\_\_

Sex (circle one): M F

Junior Birth Date: \_\_\_\_/\_\_\_\_/\_\_\_\_  
 Mo Day Yr

Please send payment and this form to:  
 P. Buckley Moss Society  
 74 Poplar Grove Lane  
 Mathews, VA 23109

Tele: (804) 725-7378 ~ Fax: (804) 725-3040  
 Email: [society@mossociety.org](mailto:society@mossociety.org)  
 Website: [www.mossociety.org](http://www.mossociety.org)

## Foundation Ornament



*Tree of Learning*

The P. Buckley Moss Foundation along with P. Buckley Moss Galleries is offering a special porcelain ornament for 2011 featuring Pat's *Tree of Learning* image. This special ornament will retail for \$42. For every ornament pre-ordered before May 31, \$21 from the sale will be donated to the Foundation. After May 31, the Foundation will receive \$10.50 from the sale of each ornament.

Before May 31, pre-orders are not available to galleries at a wholesale discount. Galleries taking pre-orders on behalf of their customers will be credited with a \$5 credit to their account. After May 31, galleries will be able to purchase the ornament for \$26.25. The ornament will be available for shipment in July.



74 Poplar Grove Lane  
Mathews, Virginia 23109

CHANGE SERVICE REQUESTED

Presort  
Standard  
US Postage  
PAID  
Yorktown, VA  
Permit No 80

## YOUR MEMBERSHIP INFORMATION & RENEWAL FORM

### YOUR MEMBERSHIP INFORMATION:

ITEM DESCRIPTION	<i>Put a check in the box for each item you would like to order.</i>	AMOUNT
<b>Membership Renewal</b>	<b>Add \$5 a year for foreign members.</b>	
<input type="checkbox"/> \$38 Adult Renewal	<input type="checkbox"/> \$28 Junior Renewal	<input type="checkbox"/> \$33 Senior Renewal Rate (65 or older)
One dollar of your membership dues may be donated to the Moss Foundation. This donation will not increase your dues and may be tax deductible. Make this donation? ____ Yes ____ No		
<input type="checkbox"/>	5 Year Anniversary Pin \$20 (Check for eligibility in the membership information box above.)	
<input type="checkbox"/>	10 Year Anniversary Pin \$20 (Check for eligibility in the membership information box above.)	
<input type="checkbox"/>	15 Year Anniversary Pin \$20 (Check for eligibility in the membership information box above.)	
<input type="checkbox"/>	20 Year Anniversary Pin \$20 (Check for eligibility in the membership information box above.)	
<input type="checkbox"/>	Pewter Geese Pin \$20 (includes shipping)	
<input type="checkbox"/>	Earrings: <i>Summer Celebration</i> (girl and boy with flag) \$35 + \$2 shipping = \$37	
<input type="checkbox"/>	Earrings: <i>Fall Friends</i> (scarecrow) \$35 + \$2 shipping = \$37	
<input type="checkbox"/>	Earrings: <i>Winter's Friend</i> (two geese) \$35 + \$2 shipping = \$37	
<input type="checkbox"/>	Earrings: <i>Hug Me</i> (dog) \$35 + \$2 shipping = \$37	
<input type="checkbox"/>	Earrings: <i>Frosty Family Christmas</i> (snowmen) \$35 + \$2 shipping = \$37	
Virginia residents add 5% sales tax to all products except membership renewal		
		<b>TOTAL:</b>

#### Automatic Renewal Option Form

\_\_\_\_ YES! I authorize you to enroll me in the Automatic Renewal Program for future P. Buckley Moss Society membership renewals. Each year when membership items are ready for shipment in March or April, an automatic payment will be charged to my credit card, according to the information I've provided below. This process will begin with my 2011 renewal and continue until I notify the P. Buckley Moss Society otherwise.

Signature: \_\_\_\_\_ Date: \_\_\_\_\_

Visa/MC # \_\_\_\_\_ Exp. Date: \_\_\_\_\_

**PLEASE READ:** If you need to renew, use the form below and provide payment (check or credit card). Refer to the box at the top of the page for your renewal date. If you want to sign up for the automatic renewal program, complete the form to the left.

**PAYMENT TYPE:**  Check  Visa/Master Card/Discover

Credit Card #: \_\_\_\_\_

Expiration Date: \_\_\_\_\_ Phone #: (\_\_\_\_) \_\_\_\_\_

Signature: \_\_\_\_\_