

# SENTINEL

SEPTEMBER 2012



VOL. 26 NO. 3  
SEPTEMBER 2012

#### MISSION STATEMENT

The Society's mission is to foster appreciation of the art of P. Buckley Moss, to promote charitable endeavors consistent with her ideals, and to promote the use of the arts in special education.

Moss, to promote charitable endeavors consistent with her ideals, and to promote the use of the arts in special education.

- 1-3 Collector's Convention
- 3 Public Television
- 4 2012 Scholarship Winners
- 5-6 2012 Alaska Cruise
- 7 Wet Paint
- 8 Upcoming Shows and Collectors' Corner
- 9 Chapter News
- 10 2013 Greek Isles Cruise

## Letter from Pat

Dear Friends,

Looking back at the year so far, I am excited about what we've accomplished. We had a fabulous Collectors' Convention in Iowa, which raised over \$8,000 for the P. Buckley Moss Foundation for Children's Education, and an amazing trip to Alaska, which also raised money for the Foundation via our onboard auction. Our wonderful Society Chapters have been hard at work (and play), raising money for the Foundation as well as local charities. Aren't we blessed to have so many like-minded friends who care about others! We are making a difference!

I am happy to announce that plans are already underway for another group trip. Our adventure in 2013 will be a 12-day tour of the Mediterranean. We will be taking the *Ruby Princess* from Rome, Italy, on July 23, 2013, and ending in Venice, Italy, on August 4. We will stop at Naples, Italy (Pompeii and Capri); Santorini, Greece; Kusadasi, Turkey (Ephesus); Mykonos, Greece; Athens, Greece (Piraeus); Katakolon (Olympia), Greece; Corfu, Greece; and Dubrovnik, Croatia, ending with two nights on the ship in Venice, Italy. More details are available elsewhere in this *Sentinel* issue. We have negotiated a \$50.00 rebate for each berth sold, with \$10.00 going to the Foundation and \$40.00 to the ticket holder. This is something we have done in the past, and we are bringing it back due to the need for funds for children and teachers.

My busy fall show season is now underway, and I'm enjoying seeing everyone again.

Love,



*Pat enjoyed Denali National Park with her daughter Mary and grandson Sean.*

## Society's 25th Anniversary Celebrated at July Collectors' Convention

The P. Buckley Moss Society was founded 25 years ago and is still going strong! Pat, Society members, staff, and collectors celebrated the Society's milestone birthday during Pat's July 20-21 Collectors' Convention at the Riverside Casino & Golf Resort in Riverside, Iowa. The Saturday night Dinner Dance and Auction had a birthday party theme, with the fundraising proceeds benefiting the P. Buckley Moss Foundation for Children's Education. *(cont. next page)*



## Collectors' Convention *(cont.)*

The evening was very successful, with the live auction bringing in \$7,020. A beautiful, big horse quilt that was designed and stitched by Debbie Frizzell and April West for the Foundation, and incorporated one of Pat's hand-painted quilt centerpieces, went home with none other than Debbie! Her husband came to the Dinner Dance especially to buy back that quilt for her, and he did. Congratulations! Another beautiful quilt, designed and stitched by Moss Country Friends Chapter member Pearl Yoder, was also a big hit and went home with Judy Roe, who is a past member of the Society's board of directors.



*The precious quilt made by Pearl Yoder—the fourth one she's made for the Foundation!*



*Readying the horse quilt for display, clockwise from left: volunteer Nate Fick; Nancy Brenneman, President of the Moss Country Friends Chapter; Pat; Troy Reineke of the Riverside Casino & Golf Resort; Marion Roark, Treasurer of the P. Buckley Moss Foundation for Children's Education; Pat's daughter Patty Moss; and Patty's friend Mary Morgan.*

An additional \$1,445 was raised for the Foundation from the "sale" of matted black and white attendee prints. Each convention attendee received a complimentary black and white print, *Where the Faithful Meet*, but for a donation, they could receive one that was already matted. The mats

were previously donated by the Moss in the New River Valley Chapter, and Jeff Batterson of J. B. Frame & Design in Washington, Iowa, cut the mats to fit the prints. The total raised for the Foundation was \$8,465.

The Framing Competition winners were First Place, White's Gallery of

Osceola, Iowa, for their *Shades of Pink*; Second Place, M & J Art & Frame Gallery of Ottumwa, Iowa, for their *A Time to Harvest*; Third Place, Canada Goose Gallery of Waynesville, Ohio, for their combination of *Magic in the Air I & II*, with an embroidered image of a haunted house in the middle. Canada Goose also won the popular choice vote.



*Convention judges chose Shades of Pink, framed by White's Gallery of Osceola, IA, to be the winner of the Framing Competition. L. to R.: Carrie White and her mother-in-law Kim, Pat, and Kay Frizzell.*



*Canada Goose Gallery's combination of Magic in the Air I & II, with an embroidered image of a haunted house in the middle, won the popular choice vote for the Framing Competition. Pictured above are Jake Henderson of P. Buckley Moss Galleries, Ltd., (left) and Laura DeRamus, co-owner of Canada Goose Gallery (right).*

The counted Cross Stitch Competition winner, by popular choice, was Sandra Sheldon's *Together in the Park*.

## Collectors' Convention *(cont.)*



*Sandra Sheldon, right, won first place for her counted cross stitch of Together in the Park.*

The weekend festivities kicked off with a tour of Kalona's Historical Village and Quilt & Textile Museum on Friday. The Museum's co-founder Marilyn Woodin gave a wonderful talk, and Pat was particularly thrilled to see Steve Reif's amazing collection of spool cabinets again. Over thirty people joined Pat for the tour and luncheon. A special treat for Pat was getting to see the Max Cast Sculpture and Foundry. Pat said, "Kalona has so much to offer, including a fascinating foundry, and I was delighted to be given a tour of it." Pat noticed the Foundry during the walking Quilt Block Tour, and Moss Country Friends Chapter President Nancy Brenneman was very enthusiastic about her having a chance to see it. It turned out that Doris Greiner, owner

of The Village Shoppe in Kalona, knows the founders Steve Maxon and Doris Park well, and she, Nancy, and Pat were able to go inside and have a private tour.

set up and staff the Convention, as well as take it all back down; and coordinated and organized the very successful Saturday night Dinner Dance and Auction to benefit the Foundation for



*L. to R.: Steve Maxon, co-owner of Max Cast Sculpture and Foundry; Pat; Art T. Poepppe; Ray Poepppe, artist; Paul Algueseva, artist; and Doris Park, Foundry co-owner.*

Pat, P. Buckley Moss Galleries, Ltd., and the Society are most grateful to Doris Greiner, Nancy Brenneman, and the members of the Moss Country Friends Chapter, for they really were the key to the success of the Convention. They coordinated and organized the Friday tour and luncheon; helped

Children's Education. Other Society chapters also supported the Convention by volunteering to help and donating items for the auction.

A second celebration will be held at Pat's Museum and Barn Open House on December 1st. Call 1-800-430-1320 for details.

## Public Television

*The Lady Behind the Brush* documentary, produced by WVPT-TV in Harrisonburg, Virginia, has been gaining broader recognition. In March it was aired throughout Iowa on Iowa Public Television (IPTV) and again in Connecticut (CPTV) in September. Lebanon, Ohio, public television is scheduled to interview Pat while she is in Waynesville for

her show with Canada Goose Gallery.

Our goal is to get Pat on TV in every state where we have a strong presence. If you would like to see Pat on your local public TV station, consider contacting them. Let them know that Pat is a famous artist who overcame dyslexia and cancer and now, through her success, gives

back to communities all across the country—and there is a ready-made public TV documentary all about her. We also have a highly successful fundraising program to accompany the showing of the documentary. If enough of you are heard, they will look into it. Please let us know if you do reach out to your public TV station.

# The P. Buckley Moss Foundation for Children's Education Announces 2012 Scholarship Awards

The P. Buckley Moss Foundation for Children's Education is pleased to announce the recipients of its three scholarships.

## P. Buckley Moss Endowed Scholarship (amount of award varies, renewable)

Joel Elmore, a graduating senior of The New Community School in Richmond, Virginia, is the recipient of the 2012 P. Buckley Moss Endowed Scholarship, which is awarded to one or more high school seniors with financial need, a certified language-related learning difference, and artistic talent who plan a career in the visual arts.



Joel is a member of the National Honor Society, displays leadership qualities, sets a fine example, encourages others, and

always keeps his eye on the goal. His love, passion, and talent for art lend nicely to his character and his need to share with others.

Joel does not view himself as having a learning disability but, rather, as having an opportunity to learn differently, an opportunity to see the world in a different perspective. Art allows Joel to express himself and has been (and will continue to be) a place to get away from a world full of words. Art will serve him as another language to communicate clearly his ideas to the world.

## Anne & Matt Harbison Scholarship (\$1,500, renewable)

The recipient of the 2012 Anne & Matt Harbison Scholarship is Rachel Best of Redmond, Washington. The Harbison Scholarship is awarded to one high school senior with a certified language-related learning difference who is pursuing post-secondary education.



With a learning difference of dyscalculia and dyslexia, Rachel is described as resilient, disciplined, and mature and

looks beyond her disability. Rachel graduated from Belevue Christian High School with a cumulative grade point average of 3.82, while participating on the volley ball and golf teams.

Rachel says, "In the areas of academics very little has come easily. I recognize that I have been able to be successful only because of my hard work and the effort of many others who have supported me over many years. I have had to work harder than most to achieve my academic goals. I no longer see my learning difficulties as a burden, but as a blessing. It has shaped me into a more compassionate person. I no longer view my learning challenges as a handicap, but as an affirmation of my individuality."

As a Girl Scout, Rachel was a camp counselor training graduate, serving as an Ambassador to the World Girl Scout Camp in Cuernavaca, Mexico. Members of the Girl Scout Troop organized a recreational field day for disadvantaged children, using teamwork, creativity, and cross-cultural sensitivity skills.

## Judith Cary Leadership Memorial Scholarship (\$1,000)

Kemlyn Tan Bappe is the 2012 recipient of the Judith Cary Leadership Memorial Scholarship, which is awarded to a student who is working either full-time or part-time toward special needs certification or an undergraduate or graduate degree in some field of special education.

Kemlyn received a Bachelor of Arts degree in Studio Art, a Master of Divinity from Southwestern Baptist Theological Seminary, and was the Creative Arts Director for the Center for Urban Missions where she coordinated volunteers and taught visual art and drama to "at-risk" students. As a teaching artist, she is on the Iowa Arts Council, CULTUREALL, and VSA Iowa Teaching Artist rosters. She is the recipient of the prestigious VSA National Teaching Artist Fellowship and has undergone professional development in the areas of Universal Design for Learning, Differentiated Instruction, and Arts Integration.



Pursuing a Masters in special education to work with students living with learning differences, Kemlyn will continue to engage educa-

tional theory and strategy development that will lead to student success. When she is not painting or working as a Teaching Artist, she works in the middle and high schools in the Mount Pleasant Community School District where she enjoys working with students living with disabilities most.

# 2012 Alaska Cruise & Land Tour

Pat and 64 of her friends and family joined up in July for an exciting tour of Denali National Park in Alaska via the Tundra Wilderness Tour and a cruise along the Alaskan Coast aboard the *Zaandam*.

Of the Tundra Wilderness Tour, Pat said, "Our ride on the *McKinley Explorer* train was spectacular. What a lovely way to travel! The upper level contained comfortable living and observation areas, and the lower level of the train contained a dining room and other amenities.

"The tour of Denali National Park was a thrill. Mount McKinley was majestic; there is just no other way to describe it. At 20,320 feet above sea level, it is the highest mountain peak in the United States and North America. The animals in the park are incredible. I couldn't believe the size of the grizzly bears!"

In addition to the bears, the group was able to observe a wide variety of native wildlife, including the State Bird of Alaska, which is the Willow Ptarmigan; whales (viewed from the *Zaandam*); bears; moose; caribou; and Dall sheep.



*Mount McKinley*



*It was such fun to see amazing Alaska with so many friends!*



*Traveling on the McKinley Explorer train through Denali.*



*Pat and her grandson Sean enjoying time together onboard the MS Zaandam.*



*Marjorie Glacier at Glacier Bay, Alaska.*



*A beautiful quilt for the P. Buckley Moss Foundation for Children's Education was auctioned aboard the ship. The quilt was made by Cindy Knotts of Xenia, OH, incorporating one of Pat's hand-painted centerpieces, and Ginny Myers (pictured above) was the high bidder.*

*(continued on next page)*

## 2012 Alaska Cruise & Land Tour *(cont.)*

After the Tundra Wilderness Tour, the group boarded the *Zaandam* at Seward (Anchorage), Alaska, for their cruise along the Alaskan Coast, with stops at Haines, Juneau, and Ketchikan, ending in Vancouver, British Columbia (Canada). Some members topped off their adventure with a tour of the fabulous Butchart Gardens in Victoria, Canada.



*Butchart Gardens in Victoria, Canada. The gardens are breathtaking!*

Pat received lots of questions about her Alaska vacation, and the most asked question was, "What was your favorite thing?" Pat answered, "There were so many amazing, wonderful things, but I have to say that my very favorite was a totem pole featuring a whale that was in the museum in Anchorage. It was the most beautiful, graceful thing, and I loved it!"



*This glorious work of art at the museum in Anchorage is around 200 years old, and Pat fell in love with it!*

## Commemorative Brick Walkway Update

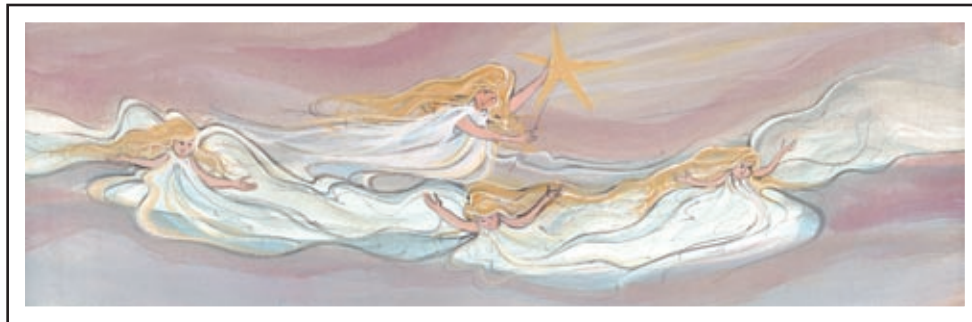
The P. Buckley Moss Foundation for Children's Education office has taken over the ordering of commemorative bricks for the Commemorative Walkway from the Society office. The price per brick is still \$40, and all proceeds help fund the P. Buckley Moss Endowed Scholarship. To place an order for a commemorative brick,

please contact the Foundation office at 540-932-1728 or [foundation@mossfoundation.org](mailto:foundation@mossfoundation.org).

The Commemorative Brick Walkway was dedicated on July 16, 1999, not only as a beautiful addition to the grounds at the P. Buckley Moss Museum, but also as a unique way for people to honor someone who has

touched their lives. The Foundation has made a list of all the commemorative bricks in each of the eight sections of the walkway. The alphabetical list of recipient bricks designates in which of the eight sections the brick(s) can be found. The list is available at the receptionist's desk at the Museum.

# Wet Paint



*Herald Angels*  
Giclee on paper  
Edition 250 and 25 artist's proofs

IS: 5 x 16-1/2 ins., \$85



*H-O-K-I-E*  
Giclee on paper  
Edition 500 and 25 artist's proofs

IS: 6-5/8 x 11-3/4 ins., \$80



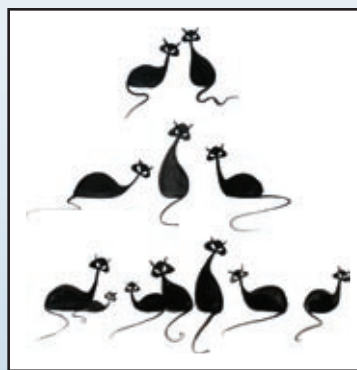
*Another Maize and Blue Meltdown*  
Giclee on paper  
Edition 750 and 25 artist's proofs  
Available December 10

IS: 6-3/8 x 13 ins., \$80



*Hangin' in the Pumpkin Patch*  
Giclee on paper  
Edition 250 and 25 artist's proofs

IS: 6-3/8 x 12 ins., \$70



*Meow 1*  
IS: 6-7/16 x 6-3/8 ins., \$55  
Giclee on paper  
Edition 250 and 25 artist's proofs



*Meow 2*  
Giclee on paper  
Edition 250 and 25 artist's proofs

IS: 2-3/4 x 13 ins., \$55

## Upcoming Shows with Pat

Pat will appear at the following galleries during the next few months to meet her collectors and sign purchases of her work. These galleries will have an expanded inventory of prints and originals, and they work hard to make each event enjoyable. This schedule is subject to change at any time. Please call the galleries for show details.

**Oct. 12-14** Waynesboro, VA  
Museum and Barn Open House  
(800) 343-8643

**Nov. 4** Buchanan, VA  
Apple Barn Gallery  
(540) 254-6677

**Nov. 30-Dec. 2** Waynesboro, VA  
Museum and Barn Open House  
(800) 343-8643

**Oct. 19-20** Waynesville, OH  
Canada Goose Gallery  
(513) 897-4348

**Nov. 10** Carroll, IA  
The Finishing Touch Gallery  
(712) 792-6665

**Dec. 7-8** Columbus, OH  
Gallery Art Center  
(614) 442-1109

**Oct. 27** Hanover, PA  
Martin's Gallery  
(717) 632-3355

**Nov. 11** Osceola, IA  
White's Gallery  
(641) 342-2643

**Dec. 15** Kingsport, TN  
Up Against the Wall  
(423) 246-7210

**Nov. 2-3** Leesburg, VA  
Medlin Art, Ltd.  
(703) 771-8696

**Nov. 16-18** St. Petersburg, FL  
Finn Gallery  
(727) 894-2899

## Upcoming Shows withOUT Pat

Although Pat will not be appearing at the following gallery shows, orders and purchases made at these events can include requests for special signatures and inscriptions of up to four words on prints. Galleries presenting Shows without Pat increase their print inventories and obtain original prints and watercolors for the show. This schedule is subject to change at any time. Please call the galleries for show details.

**Nov. 2-3** Buchanan, VA  
Apple Barn Gallery  
(540) 254-6677

**Nov. 17** Columbiana, OH  
Vivian's Antiques & Collectibles  
(330) 482-3144

## Collectors' Corner

**FOR SALE:** Professionally matted and framed prints *Tommy* and *Neighborhood Patrol*, \$100 each. E-mail: margsing@hotmail.com.

**FOR SALE:** Boxed/never worn 2002-2011 renewal brooches, \$450 for set or \$50 each; Madonna & Child "Millennium" Cross and Angel Cross, \$50 each or \$90 for both; *Roanoke's Farmers Market* print, \$120; and *Roanoke Valley* print, \$120. Will take \$500 for all. E-mail: ALHS66@msn.com.

**FOR SALE:** *Two Gentlemen of Minneapolis*, signed and dated by Pat Moss, in gold frame. \$650 plus \$45 shipping. Contact Alice at (618) 667-8337.

**FOR SALE:** 1995-2010 porcelain renewal brooches (16 total) in original boxes & never worn, \$300 for all or best offer. Moss dolls (7) with certificates & original boxes: *Benjamin & Elizabeth*; *Roseanna & Joshua*; *Hannah, Jacob, & Isaac*; and *Hattie* (rare grandmother) with vintage cane chair, \$425 for all or best offer. (312) 663-1569 or e-mail: cjgstoover@aol.com.

**WANTED:** 1989 membership brooch (reasonably priced) to complete collection of pins. (540) 337-2680 or e-mail: chumphreys44@hotmail.com.



# Chapters Continue Charity Efforts, Activities

**CENTRAL IOWA** Chapter (Des Moines, IA) obtained a *Des Moines by the River* print from the Society's Charity Print Program for the live auction held in conjunction with the golf tournament fundraiser for Ronald McDonald House Charities of Central Iowa, Inc. The print was framed by Kenneth Paul Gallery and raised \$255. The Chapter also assisted the Animal Rescue League of Iowa in obtaining a *Feedin' Time* print from the Society for its Raise Your Paw Benefit Auction. The print was framed by Dot's Gallery and Frame Shop and raised \$500. The lucky winner was Roxanne Conlin.

**DAUGHTER OF THE STARS** Chapter (Strasburg, VA) obtained a *Massanutten Ride* print from the Society's Charity Print Program and raffled it to raise funds to support their scholarships for learning different high school graduates who are continuing their educations. The Chapter gave three scholarships this year. The print was framed by King James Galleries of Winchester and raised \$605. The lucky winner was Dorothy Miller.

**FRIENDS MEETING** Chapter (Waynesville, OH) obtained a *Springtime in Savannah* print from the Society's Charity Print Program and raffled it to raise funds for Greenebucs, which is the local chapter of AMBUCS™, Inc. (provides therapeutic tricycles to children and adults with mobility disabilities). The print was framed by Canada Goose Gallery and raised \$991. The lucky winners were Charlotte and Tim Omeara of Beaver Creek, Ohio.

**HEART OF IOWA** Chapter (Ames, IA) held a charity tea to benefit Raising Readers of Story County. The mission of Raising Readers is to improve language and literacy

development in children from birth to eight years and also to nurture healthy parent-child relationships. The Chapter raised \$2,648 for Raising Readers. Part of that total came from the raffle of a *Hint of Purple* print, which was obtained from the Society's Charity Print Program and framed by Country Gallery. The *Hint of Purple* and other donated, framed Moss prints brought in \$792.

ships for students who attend Indian Hills Community College. The print was framed by M & J Gallery and raised \$3,841. George Manning of Keosauqua, Iowa, was the lucky winner.

**THREE RIVERS MOSS** Chapter (Pittsburgh, PA) obtained a remarked *For the Children* print from the Society's Charity Print Program and raffled it to raise funds



Attendees at Heart of Iowa Chapter's fundraising tea enjoyed entertainment by "The Sister Act".

**MOSS HEAVEN** Chapter (Fairfield, IA) assisted Indian Hills Community College of Ottumwa, Iowa, in obtaining a *The Olde General Store* print from the Society's Charity Print Program to raffle during its annual Indian Hills Foundation Auction. The proceeds from the auction are used to provide scholar-

for the Three Rivers Adoption Council. The print was framed by Frames and More and raised \$1,176. Chapter member Marianne Gorcsan was the lucky winner.

**Total raised for charity in these chapter reports is an excellent \$10,016.**

Join the P Buckley Moss Society for a  
12 day Greek Isles Cruise on July 23, 2013.



Call Stacy's Travel at 734-243-6330 for more details or to set up your cruise.



Ruby Princess from Rome to Venice July 23<sup>rd</sup> - August 4<sup>th</sup>

Tuesday, July 23 - [Rome \(Civitavecchia\), Italy](#) ship departs Rome 6 p.m. - Wednesday, July 24 [Naples, Italy \(for Capri & Pompeii\)](#) 7:00 a.m. - 7:00 p.m. Thursday, July 25 At Sea - Friday, July 26 [Santorini, Greece](#) 8:00 a.m. 7:00 p.m. - Saturday, July 27 [Kusadasi, Turkey \(for Ephesus\)](#) 8:00 a.m. 5:00 p.m. - Sunday, July 28 [Mykonos, Greece](#) 1:00 a.m. 6:00 p.m. - Monday, July 29 [Athens \(Piraeus\), Greece](#) 6:00 a.m. - 5:45 p.m. - Tuesday, July 30 [Katakolon \(Olympia\), Greece](#) 8:00 a.m. 6:00 p.m. - Wednesday, July 31 [Corfu, Greece](#) 8:00 a.m. 6:00 p.m. - Thursday, August 1 [Dubrovnik, Croatia](#) 7:00 a.m. 5:00 p.m. - Friday, August 2 At Sea - Saturday, August 3 [Venice, Italy](#) 9:00 am - Ship is in port for Overnight Stay - Sunday, August 4 [Venice, Italy](#) - Departures for home or extend your stay

---

Prices below include taxes and round trip transfers and are based on double occupancy. They do not include airfare or any pre or post cruise accommodations or tours. We are arranging accommodations before and after the cruise and tours in Rome and Venice. More details on the pre and post cruise arrangements will be available soon.

- **Inside Staterooms** - from \$ 2,497.00 per person - Deposit of \$500.00 per person
- **Ocean view Staterooms** \$3,297.00 per person or \$3,347.00 per person depending on location - Deposit \$675.00 per person
- **Balcony Staterooms** from \$3,497.00 per person - Deposit of \$725.00 per person
- **Mini Suites** from \$4,197.00 per person - Deposit of \$850.00 per person

**Deposit due by October 5<sup>th</sup> to guarantee group rate and group amenities.**  
Remainder of Balance due by March 1, 2013.

To see the ship layout at features of the Ruby Princess, the newest ship in the Princess fleet, visit:  
<http://www.princess.com/learn/ships/ru/index.html>



## P. BUCKLEY MOSS SOCIETY NEW MEMBERSHIP APPLICATION

The Moss Society performs charity work on behalf of the artist, focusing on children's charities. The box on the right should list the information on the Society member who will receive credit for recruiting you. Please add \$5 a year for foreign members.

**CHECK ONE:**  New Adult Membership \$38  
 New Senior Membership \$33 (65 or older)  
 New Junior Membership \$28 (for children ages 17 and under)

Name of Member: \_\_\_\_\_ Date: \_\_\_\_\_

Address: \_\_\_\_\_

City: \_\_\_\_\_ State: \_\_\_\_\_ Zip: \_\_\_\_\_

Please donate \$1 of my membership dues to the Foundation.  No, thank you.

**PAYMENT TYPE:** Check | Credit Card  
(Please circle one.)

VISA/MC/Discover No: \_\_\_\_\_ Exp. Date: \_\_\_\_\_

Signature: \_\_\_\_\_

Check No: \_\_\_\_\_ TOTAL \$: \_\_\_\_\_

**For new memberships only; if you wish to renew, please use the form on the back.**

**RECRUITER INFORMATION**  
Recruiter Name: \_\_\_\_\_  
Recruiter Membership #: \_\_\_\_\_

Telephone: (\_\_\_\_\_) \_\_\_\_\_

Email: \_\_\_\_\_

Sex (circle one): M F

Junior Birth Date: \_\_\_\_/\_\_\_\_/\_\_\_\_  
Mo Day Yr

Please send payment and this form to:  
P. Buckley Moss Society  
74 Poplar Grove Lane  
Mathews, VA 23109

Tele: (804) 725-7378 ~ Fax: (804) 725-3040  
Email: [society@mossociety.org](mailto:society@mossociety.org)  
Website: [www.mossociety.org](http://www.mossociety.org)



### Moss Society Wine Glasses

This handsome set of four P. Buckley Moss Society wine glasses comes with one of four favorite P. Buckley Moss images printed on the front; horses, cats, geese, and a Moss tree. These will make wonderful gifts!



The cost is \$40 plus \$8 shipping, and tax if applicable. Wine Glasses can only be ordered by Society members. Please include check for \$48 for each set ordered; Virginia residents please include sales tax of \$2 per set. You may also pay with credit card if desired. Send this form with payment to the address below or call to order.

Quantity desired: \_\_\_\_\_ sets      Membership Number: \_\_\_\_\_

Name: \_\_\_\_\_ Address: \_\_\_\_\_

City: \_\_\_\_\_ State: \_\_\_\_\_ Zip: \_\_\_\_\_

Credit Card #: \_\_\_\_\_ Expiration: \_\_\_\_\_

Send form to: P. Buckley Moss Society, 74 Poplar Grove Lane, Mathews, VA 23109, (800) 430-1320.



74 Poplar Grove Lane  
Mathews, Virginia 23109

CHANGE SERVICE REQUESTED

Presort  
Standard  
US Postage  
PAID  
Yorktown, VA  
Permit No 80

PLEASE NOTE OUR NEW ADDRESS

## YOUR MEMBERSHIP INFORMATION & RENEWAL FORM

### YOUR MEMBERSHIP INFORMATION:

ITEM DESCRIPTION	<i>Put a check in the box for each item you would like to order.</i>	AMOUNT
<b>Membership Renewal Add \$5 a year for foreign members.</b> <input type="checkbox"/> \$38 Adult Renewal <input type="checkbox"/> \$28 Junior Renewal <input type="checkbox"/> \$33 Senior Renewal Rate (65 or older) One dollar of your membership dues may be donated to the Moss Foundation. This donation will not increase your dues and may be tax deductible. Make this donation? ____ Yes ____ No		
<input type="checkbox"/>	5 Year Anniversary Pin \$20 (Check for eligibility in the membership information box above.)	
<input type="checkbox"/>	10 Year Anniversary Pin \$20 (Check for eligibility in the membership information box above.)	
<input type="checkbox"/>	15 Year Anniversary Pin \$20 (Check for eligibility in the membership information box above.)	
<input type="checkbox"/>	20 Year Anniversary Pin \$20 (Check for eligibility in the membership information box above.)	
<input type="checkbox"/>	25 Year Anniversary Pin \$20 (Check for eligibility in the membership information box above.)	
<input type="checkbox"/>	Pewter Geese Pin \$20 (includes shipping)	
<input type="checkbox"/>	Earrings: <i>Summer Celebration</i> (girl and boy with flag) = \$37 (includes shipping)	
<input type="checkbox"/>	Earrings: <i>Fall Friends</i> (scarecrow) = \$37 (includes shipping)	
<input type="checkbox"/>	Earrings: <i>Winter's Friend</i> (two geese) = \$37 (includes shipping)	
<input type="checkbox"/>	Earrings: <i>Hug Me</i> (dog) = \$37 (includes shipping)	
<input type="checkbox"/>	Earrings: <i>Frosty Family Christmas</i> (snowmen) = \$37 (includes shipping)	
<input type="checkbox"/>	Set of 4 Wine Glasses = \$48 (includes shipping)	
Virginia residents add 5% sales tax to all products except membership renewal		
		<b>TOTAL:</b>

#### Automatic Renewal Option Form

\_\_\_\_YES! I authorize you to enroll me in the Automatic Renewal Program for future P. Buckley Moss Society membership renewals. Each year an automatic payment will be charged to my credit card according to the information I've provided below. This process will begin with my 2012 renewal and continue until I notify the P. Buckley Moss Society otherwise.

Signature: \_\_\_\_\_ Date: \_\_\_\_\_

Visa/MC # \_\_\_\_\_ Exp. Date: \_\_\_\_\_

**PLEASE READ:** If you need to renew, use the form below and provide payment (check or credit card). Refer to the box at the top of the page for your renewal date. If you want to sign up for the automatic renewal program, complete the form to the left.

**PAYMENT TYPE:**  Check     Visa/Master Card/Discover/Amex

Credit Card #: \_\_\_\_\_

Expiration Date: \_\_\_\_\_ Phone #: (\_\_\_\_) \_\_\_\_\_

Signature: \_\_\_\_\_