

SENTINEL

JANUARY 2013



VOL. 27 NO. 1
JANUARY 2013

MISSION STATEMENT

The Society's mission is to foster appreciation of the art of P. Buckley Moss, to promote charitable endeavors consistent with her ideals, and to promote the use of the arts in special education.

- 1-3 New for 2013
- 4 Collectors Convention Update on Teachers Grants
- 5 Scholarship Deadlines Foundation Awards Teachers Grants
- 6 Upcoming Shows and Collectors' Corner
- 7 Wet Paint
- 8-9 Chapter News
- 10 Chapter Contacts

Letter from Pat

Dear Friends,

What an exciting year this is going to be! We're going to have a Collectors' Convention at the Hotel Roanoke in Roanoke, Virginia, this May 24-25, so save the date and make your reservations early. More details follow in this *Sentinel* issue.

Also, I'm very much looking forward to our Mediterranean Cruise this July. It's going to be such fun. If you are participating and have any questions, please give our volunteer cruise coordinator Bonnie-Lou Binnig a call at 727-244-2819 or e-mail at blbinnig@yahoo.com. You can also contact Ada at Stacy's Travel at

734-243-6330 or e-mail at stacystravel1@hotmail.com.

I am delighted to announce that this year the Society will be introducing two new membership levels, offering gold and sterling silver beads as new member benefits. More information on the new membership levels and this year's members-only prints is included in this issue, so read on!

Happy 2013!

Love,

New for 2013 Introducing the New P. Buckley Moss Bead

We are very pleased to announce the new P. Buckley Moss Society bead, *Forever Together*. This inaugural bead features on one side, the familiar pair of Moss geese similar to those that form the Society's logo, set in raised relief on a landscape of winter trees. The reverse side of the bead carries the "Moss" signature in raised lettering. The bead is made in the United States, adapted from Pat's geese by a master jeweler with decades of experience. Exquisitely detailed in miniature form, even down to the birds' feathers and knobby knees, these beads are much more than mere keepsakes, they are fine art jewelry.

Made of .925 sterling silver with an antiqued finish, the bead has all the best qualities of pure silver, but with the anti-tarnishing qualities that come with being sterling. It may be worn on a bracelet or a necklace; it is designed to fit the bracelets from all the popular bead manufacturers. We also offer a sterling starter bracelet (\$140) for those who do not already own a bracelet from one of the other bead manufacturers.



Enlarged to show detail,
actual size 1/2 (w) x 3/8 (h) x 1/4 (d) ins.



Starter bracelet includes 2 black and white glass beads and two stopper beads. The *Forever Together* bead comes separately with your membership.

New for 2013 *(cont.)*

New Society Membership Levels

The *Forever Together* bead is a benefit to Society members who renew at one of two new membership levels. For 2013 and beyond, we have created three levels of membership: The "Premier", the "Choice", and the "Classic." The Premier membership costs \$100 annually and entitles the member to both the silver bead and the traditional porcelain brooch. The Choice membership costs \$85 and is for those who elect to receive the silver bead only. The Classic membership remains \$38 and is for those who like the porcelain brooch only. And for those who like the luster of gold, we have a 14K gold version of the bead that is avail-

able for \$500 as an upgrade to the Premier membership (gold pin plus porcelain brooch).

This bead will be the first in a series of beads. We will treat it the same way as the existing porcelain brooch, releasing one bead a year for new and renewing members. Each year you will have the opportunity to choose whichever level of membership most suits you. At any time during the year, you will be able to upgrade your membership to a higher level. Members who have already renewed for 2013 may contact us for an upgrade. Just call us at (800) 430-1320, or drop us an email at kirstenthomas@pbuckleymoss.com.

There are Senior memberships (for those 65 and older) at each level, and the Junior membership remains unchanged.

The membership renewal form on the back page of this publication allows you to specify at which level of membership you would like to renew. Please note that each year, upon your renewal date, you will be able to select the level of membership that suits you best for the coming year. We will publish images of next year's beads and brooches in the last *Sentinel* of this year.

Classic	Porcelain Brooch	\$38	Senior Classic	\$33
Choice	Sterling Silver Bead	\$85	Senior Choice	\$80
Premier	Sterling Silver Bead and Porcelain Brooch	\$100	Senior Premier	\$95
Premier Gold	14K Gold Bead and Porcelain Brooch	\$500		
Junior	Porcelain Brooch	\$28		

2013 Porcelain Brooch

Back by popular demand, this year's brooch will be porcelain, with a pin/pendant back, and for the first time will feature one of Pat's beautiful horse portraits. We have reverted to the traditional style of porcelain pin and, because we have worked out some wrinkles in production, will have it available earlier this year, in May.



Spirit of Freedom
Brooch for Adult Members



Wings of Change
Brooch for Junior Members

2013 Adult Members–Only Print

Standing the Test of Time, the title of this year's members-only print, is one that is appropriate on many different levels. On a surface level, the old farmhouse stands the test of time, rock-solid, planted squarely in the midst of Pat's delicate, ephemeral landscape, grounded by its reflection in the pond. This house has sprung up from the landscape, a product of the human imagination, created by hard work, and has borne witness to generations of human activity, as it will for generations to come, providing shelter and comfort.

On another level, the house, without doors and a roof, is one of Pat's symbolic "spirit houses", a house for the soul, both inhabiting this world and this temporal space, yet at the same time otherworldly and outside our limited notion of time. Pat has created an eternal landscape. The soul; the human imagination and its product, art; the fruit of man's labor—all stand the test of time.

Pat's painting is a contemporary take on her Valley Style of painting, a style that itself has stood the test of time, as

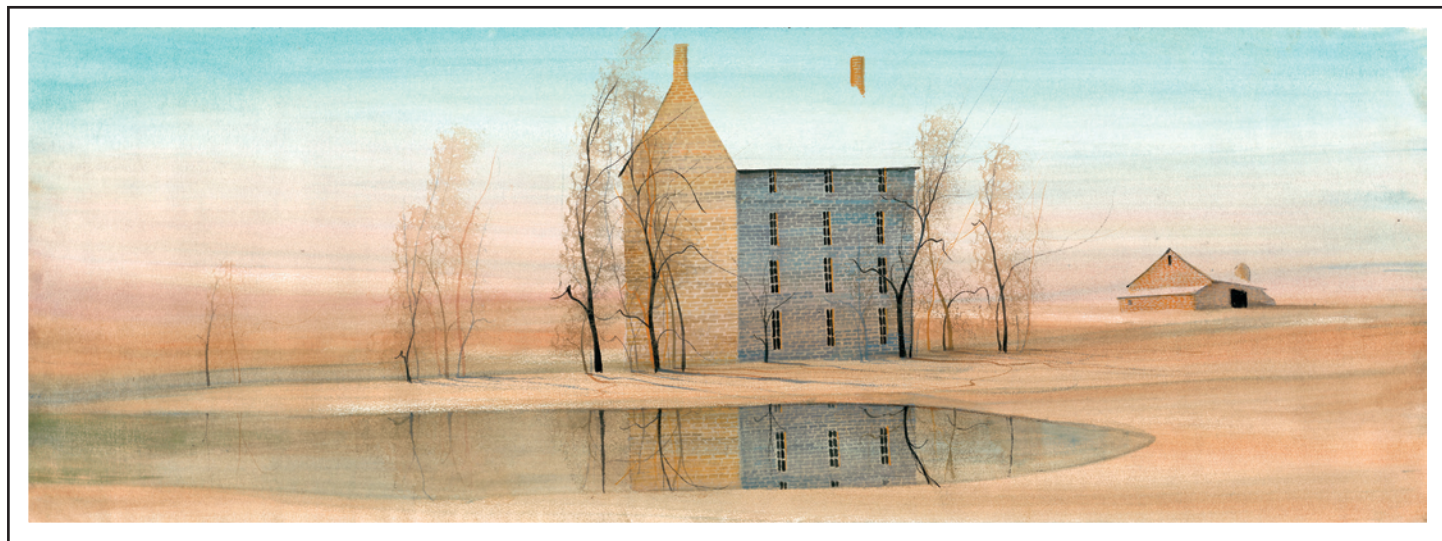
relevant and meaningful now as it ever has been, and one which continues to bring pleasure over the years.

Standing the Test of Time is available in three different sizes. You will be asked to choose your size on the redemption card (which will be sent with your brooch in May).

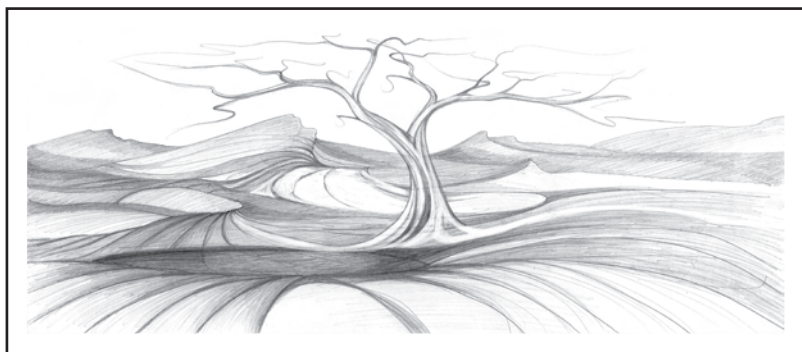
Small—6 x 17 ins. \$80

Medium—10 x 28 1/4 ins. \$200

Large—13 7/8 x 39 ins. \$500

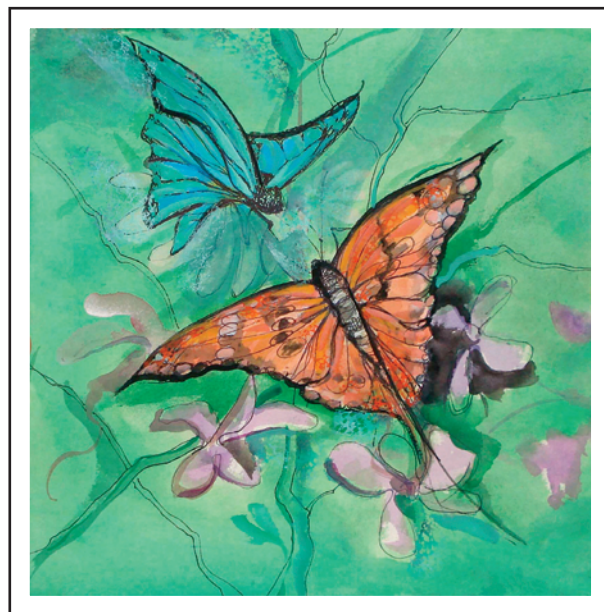


Standing the Test of Time



Rolling Hills

Black and White Renewal Gift
Comes free with your renewal (value of \$45)



Enchanted Wings is the junior print, available to junior members for \$50.

2013 Collectors' Convention to be Held in Roanoke, VA

Pat and P. Buckley Moss Galleries, Ltd., will host a Collectors' Convention at the Hotel Roanoke in Roanoke, Virginia, May 24-25, 2013. Please mark this date on your calendar! The Hotel Roanoke is holding a block of rooms for convention attendees at a special rate of \$128 per night. Please make your reservations early:

Hotel Roanoke
110 Shenandoah Ave.
Roanoke, VA 24061
PH: 540-985-5900

Friday, May 24

5:00 p.m. Exhibit and Ticket Sales Open
6:00 p.m. Cocktail and Hors d'oeuvres Reception

9:00 p.m. Exhibit Closes

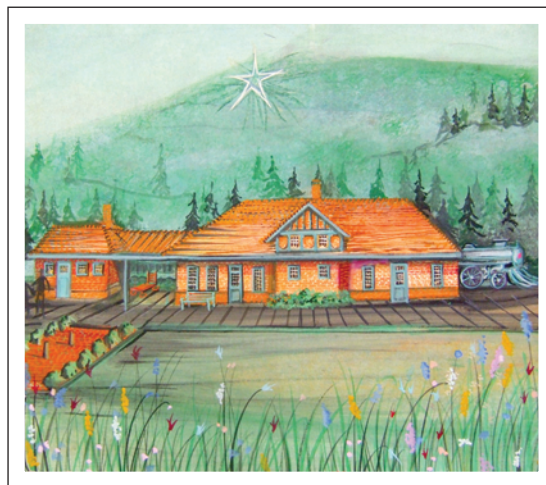
Tickets for Friday night include admission for Saturday and cost \$14 in advance through either your Moss dealer or P. Buckley Moss Galleries, Ltd., or \$16 at the door.

Saturday, May 25

9:00 a.m. Exhibit and Ticket Sales Open
5:00 p.m. Exhibit Closes
6:30 p.m. Dinner Dance and Fundraiser for the P. Buckley Moss Foundation for Children's Education

Tickets for Saturday-only cost \$8, and Dinner Dance tickets cost \$45. All tickets are available through either your Moss dealer or P. Buckley Moss Galleries, Ltd. Additional events for Saturday to be announced.

We are asking chapters to donate items for gift bags, which will be available for purchase during the Saturday night Dinner Dance. All proceeds will benefit the Foundation for Children's Education. Please contact Shirley Collins, Chapter Coordinator, at 540-872-0294 or 540-894-6217, or e-mail at budnshirl4@ntelos.net.



We are working on a Friday luncheon and tour of the Virginia Museum of Transportation. More details to follow.

The subject of this year's convention print is The Virginia Railway Passenger Station in Roanoke. The station is in the process of being renovated and part of the proceeds from the sale of the print will be donated to help with the renovation.

Update on 2010-2011 Teacher Grants

The P. Buckley Moss Foundation for Children's Education has received a wonderful report from the Southeastern Education Center in Milwaukee, Wisconsin, regarding the success of their educational program, which the Foundation funded with an award of \$700 for the 2010-2011 school year. The purpose of the program was to learn about how different things are for students in Africa and how education opportunities are not a given right for all youth there. The students participating in the program made up the words to a story and also a song within the story. As they composed the song, they worked on reading, spelling, music composition, and social interactions with one another. The drumming experience within the story helped the students develop their math skills. The students made the story board, created the art work, and had many after-school practice sessions.

The Neptune Beach Elementary School of Neptune Beach, Florida, also



The student group was invited to perform the drumming portion of the project on July 5, 2012, at Milwaukee's Summerfest, "The World's Largest Music Festival", at the Tiki Stage. Summerfest's yearly attendance is nearly one million people over the course of the ten-day festival.

shared with the Foundation how it is using its \$1,000 grant that was awarded for school year 2010-2011. This is a school-wide project, and the students are making hand-made pottery tiles for

room numbers for the entire school. This is one of the many projects they are working extremely hard on with a sense of accomplishment. The students are learning measurement, fractions, counting, sorting, right angles, and—of course—patience.

They have purchased a clay press table, clay, glaze, brushes, and other materials. Special Education teacher Kelly Crayne said, "The incorporation of the arts into our curriculum has made a difference in our students. They are motivated to learn and are proud of their achievements. We appreciate your assistance with the funding to make this dream a reality."



Scholarship Deadlines

The P. Buckley Moss Foundation for Children's Education administers three scholarships that were initiated by the Society, and **all applications must be submitted to the Foundation office at 152 P. Buckley Moss Drive, Waynesboro, VA 22980.**

Criteria and application forms are available on both the Society's website (www.mossociety.org) and the Foundation's (www.mossfoundation.org), but any questions should be referred to the Foundation office at 540-932-1728.

Completed applications for the P. Buckley Moss Endowed Scholarship, the Anne and Matt Harbison Scholarship, and the Judith Cary Leadership Memorial Scholarship must be post-marked no later than March 31, 2013.

Foundation Awards 2012 Teacher Grants

The P. Buckley Moss Foundation for Children's Education is pleased to announce the recipients for the 2012 Moss Foundation Grants. These seven grants will further programs to provide educational opportunities through the arts to children who learn differently. The total amount of these awards is \$4,000, plus an additional \$200 grant given by the Moss in the Valley Chapter. Your donations to the Foundation are greatly appreciated to help fund its grants and scholarships.

Teacher: Suzanne Nozaki
Pahoa High & Intermediate School, Pahoa, HI
"EAT", Edible Art for Teens: \$600

This project will enable students to make artistic creations using food items and special tools. Food has always been a great motivator. Art, too, has proven to be an effective method in reaching all types of learning styles. The combination of food and art will be a win-win situation, with students learning as they create and eat.

Teacher: Elaine Tucker
Sharp-Leadenhall Elementary School, Baltimore, MD
Mosaic/Stained Glass: \$600 and a special grant of \$200 given by Society Chapter Moss in the Valley

This project is an important part of a year-long, school-wide theme of "Road Trip", which incorporates lessons in literacy, social studies, science, math, and technology, using the creativity of mosaic and stained glass.

Teacher: Edo Rosenblith
Giant Steps of St. Louis, Maplewood, MO
Diversify and Enhance Existing Art Program: \$500

This project will diversify and enhance the existing art program with a wider variety of equipment and supplies and introduce new media to students with significant motor delays to build confidence in their abilities. For students with more developed motor skills, the project will introduce new media to keep them engaged and to raise their expectations for themselves.

Teacher: Janelle Sicket
Schuylkill Intermediate Unit 29 Early Intervention
Preschool Program, Mar Lin, PA
Learning, Playing, & Creating Together: \$500

This project opens the door to the art of freestyle and expressive painting to developmentally-delayed preschool children through a combination of therapeutic movements, sensory activities, and bright colors.

Teacher: Joseph VandenBussche
Clover Avenue Elementary School, Los Angeles, CA

This project will create an art rich environment that is appropriate for preschool special education students. The project will develop art centers in the classroom that allow children to use their imaginations to guide them in creating visual art. **\$460**

Teacher: Lisa Hopp
Meadow Ridge Elementary, Kent, WA
Huichol Native American Tribe String Painting: \$780

Students will read about and observe this art and how the Huichol Tribe communicated through the arts. Students will work with color, geometric lines, and symbolism to create their string painting.

Teacher: Melissa McGorty
Charles Wright Academy of Arts & Science, Detroit, MI

This project will establish art classes for special needs and autistic students, challenging them to new heights as they incorporate shapes, colors, and textures into art projects. This will increase their self-confidence and abilities, as well as improve their motor skills. **\$560**

Upcoming Shows with Pat

Pat will appear at the following galleries during the next few months to meet her collectors and sign purchases of her work. These galleries will have an expanded inventory of prints and originals, and they work hard to make each event enjoyable. This schedule is subject to change at any time. Please call the galleries for show details.

March 8-10 St. Petersburg, FL
Finn Gallery, (727) 894-2899

March 16-17 Marietta, GA
The Framery, (770) 977-8667

March 22 Lexington, VA
Frame and Design, (540) 463-1855

March 23 Winchester, VA
King James Galleries of
Winchester, (540) 869-9025

April 26-28 Waynesboro, VA
Museum and Barn Open House
(800) 343-8643

May 11 Gettysburg, PA
King James Galleries
of Gettysburg, (717) 398-2034

May 24-25 Roanoke, VA
P. Buckley Moss Collectors'
Convention, (800) 430-1320

June 21-22 Hanover, PA
Martin's Gallery, (717) 632-3355

July 6 Mathews, VA
MAG-The Gallery, (804) 725-3326

July 12-14 Waynesboro, VA
Museum and Barn Open House
(800) 343-8643

September 6-7 Warrenton, VA
Framecraft, (540) 341-0001

Sept. 13-14 Berlin, OH
Berlin Creek Gallery
(330) 893-2686

Sept. 21-22 Edinburg, VA
King James Galleries of
Winchester, (540) 869-9025

Oct. 11-13 Waynesboro, VA
Museum and Barn Open House
(800) 343-8643

Oct. 18-19 Waynesville, OH
Canada Goose Gallery
(513) 897-4348

Oct. 25 Hanover, PA
Martin's Gallery, (717) 632-3355

Oct. 26 Gettysburg, PA
King James Galleries
of Gettysburg, (717) 398-2034

Nov. 8-9 Kalona, IA
The Village Shoppe
(319) 656-3853

Dec. 6-8 Waynesboro, VA
Museum and Barn Open House
(800) 343-8643

Upcoming Shows withOUT Pat

Although Pat will not be appearing at the following gallery shows, orders and purchases made at these events can include requests for special signatures and inscriptions of up to four words on prints. Galleries presenting Shows without Pat increase their print inventories and obtain original prints and watercolors for the show. This schedule is subject to change at any time. Please call the galleries for show details.

Nov. 1-3 Buchanan, VA
Apple Barn Gallery
(540) 254-6677

Collectors' Corner

FOR SALE: Boxed/never worn 2002-2011 renewal brooches, \$450 for set or \$50 each; Madonna & Child "Millennium" Cross and Angel Cross, \$50 each or \$90 for both. Two *Roanoke's Farmers Market* prints and three *Roanoke Valley* prints, \$120 each or \$500 for all. E-mail: ALHS66@msn.com.

FOR SALE: Set of renewal brooches in original boxes, including charter geese with wreath pin (1987-2012) and anniversary brooches (5-, 10-, 15-, 20-, 25-year), \$1,500 plus shipping; set of four *Heartland Series* plates (*Blacksmith*, *Sunday Outing*, *Prairie Winter*, & *School House*) in original boxes, \$400 plus shipping; and set of four *Celebration Series* plates (*Wedding Joy*, *Christening*, *Anniversary*, & *Family Reunion*) in original boxes, \$400 plus shipping. Contact Dolores at (502) 935-5849.

FOR SALE: Complete set of membership brooches from 1989 through 2011 (total of 23), all in original boxes. Will not break up set. Asking \$50 per brooch for a total of \$1,150, plus shipping and cost of insurance for shipping. Call (717) 632-3318 or e-mail mimito4@comcast.net.

FOR SALE: Set of Society brooches from 1996 through 2004, in original boxes and in excellent condition, \$450. Call (864) 886-0827 or e-mail Prewett@bellsouth.net.

FOR SALE:: Set of 13 P. Buckley Moss figurines manufactured by Anna Perenna Porcelain, with original boxes. All 13 have the same number (#17) and have never been displayed. Original cost was \$3,935 plus tax; will sell the set for \$1,995. Contact Bob at (770) 420-2673 or e-mail bjbrod@att.net.

FOR SALE: Professionally matted and framed print *Smoky* (cat), \$95; professionally matted and framed 1988 members-only print, \$75; and professionally matted and framed print *Suzanna*, \$120. Call (302) 945-3532.

WANTED: *Robert*, framed or unframed. Contact Jeanette at (540) 342-1066 or jpat1056@aol.com.

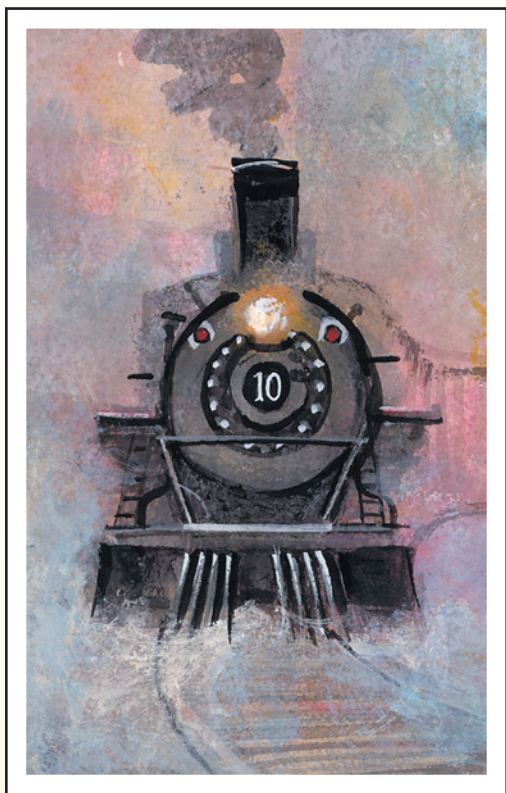
For ad guidelines and to place an ad, please contact the Society office at 1-800-430-1320 or society@mossociety.org.

Wet Paint



IMAGE OF PEACE
Giclée on Paper, Edition size 250

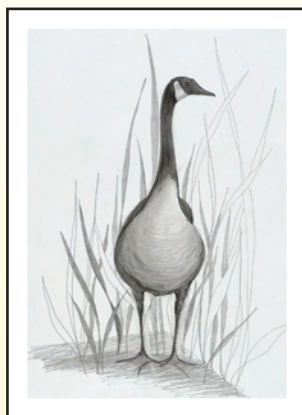
IS: 7-1/2 x 21-1/8 ins., \$125
IS: 10-1/2 x 29-5/8 ins., \$250
IS: 13-7/8 x 39 ins., \$500



FULL STEAM AHEAD IS: 12 x 7-1/4 ins., \$80
Giclée on Paper, Edition size 250



FAMILY TRADITIONS
Giclée on Paper, Edition size 250
IS: 8-5/8 x 17-3/4 ins., \$125



THE SILVER SENTINEL
Giclée on Paper, Edition size 250
IS: 6-3/4 x 4-3/4 ins., \$45



AUTISM AWARENESS
Open Edition Poster
IS 25-1/2 x 16 ins., \$70

Chapters Continue Charity Efforts, Activities

CENTRAL IOWA Chapter (Des Moines, IA) members hosted their annual charity luncheon in April, 2012, and raised \$3,228 from ticket sales, a live auction of several Moss prints and a Longaberger® basket, a silent auction, and the sale of their recipes used for the luncheon. The silent auction items were donated by chapter members, and the live auctions items were donated by Kenneth Paul Gallery, chapter members, and one non-member. A complimentary black and white Moss print was given to each attendee, courtesy of P. Buckley Moss Galleries, Ltd. The guest speaker was Linda Hoskins who, with other cancer survivors, climbed Mt. Everest. The Chapter gave her \$100, and she in turn donated half to Above & Beyond Cancer and half to the Children's Lymphoma Society. An additional \$150 was raised during the Chapter's potluck meeting in November, during which they held a silent auction of items donated by chapter members.

Chapter members gathered school supplies for Heidi Schoper's classroom at Willard Elementary School, including tissues, Ziploc bags, paper towels, index cards, glue sticks, fleece pants, briefs, and socks. The Chapter also gave Ms. Schoper \$100 gift certificates to Office Max and The Learning Post. The Chapter also donated \$310 to provide ten fall absorbent tiles for the Des Moines Bidwell Riverside Center, \$200 to Noah Beaumont (birth defect with stunted lungs) for his electric wheelchair fund, and \$150 to purchase air dryable clay for the Centre for Arts and Artists in Newton, IA. The Centre serves mentally and physically handicapped persons.

Additionally the Chapter donated \$500 to the Jester Park Equestrian Center for its winter outing called the Snowball Express and an additional \$500 for the program's scholarships. The Center provides a therapeutic riding program to help mentally and physically handicapped children with their balance,

core strength, muscle coordination, and sensory issues.

FRIENDS MEETING Chapter (Waynesville, OH) members supported GreeneBucs, which is the Greene County Chapter of National AMBUCS™, Inc. AMBUCS™ is a national non-profit service organization dedicated to creating mobility and independence for children and adults with disabilities through the provision of AmTryke® therapeutic tricycles. Fundraising activities included a dinner with P. Buckley Moss and Canada Goose Gallery. During the fundraising dinner, a quilt incorporating one of Pat's hand-painted quilt centerpieces was auctioned, with half of the proceeds from the quilt benefiting GreeneBucs and the other half benefiting the P. Buckley Moss Foundation for Children's Education (\$1,125 each).

While Pat was in town for the fundraising dinner and her show with Canada Goose Gallery, Friends Meeting members assisted with a Walk with Moss event that raised \$1,634.52 for PALS for Life (breast cancer support group), \$198.88 for GreeneBucs, and \$522.25 for the Dale Bowman Memorial Scholarship Fund. Also during that weekend, GreeneBucs awarded two trykes.

The Chapter also conducted a raffle for a *Winter at St. Thomas* Moss print to benefit GreeneBucs, which raised \$638. The drawing was held at GreeneBucs' annual Christmas dinner held December 5, 2012, at the Beaver Creek Golf Club, Beaver Creek, OH.

LAKE MARBURG MOSS Chapter (Hanover, PA) conducted two fundraisers in support of the Martin's Gallery Scholarship Fund. The funds raised provided two \$2,000 scholarships for local college students. The Longaberger® Basket Lotto in July netted \$2,500, and the Vera Bradley Lotto in November netted \$1,950. Chapter members also collected gifts, including toys, clothing, and gift cards, for a family whose 36-year-old mother passed away in November from breast



Members of the Lake Marburg Moss Chapter presented Martin's Gallery owner Les Martin with the proceeds from their November Vera Bradley Lotto. The proceeds benefited the Martin's Gallery Scholarship Fund.

cancer, leaving the father with a set of 6-year-old twin girls and an 8-year-old girl. The amount donated totaled approximately \$1,000.

MOSS IN THE COUNTRY Chapter (Roanoke, VA) received a remarked *Mountain Homestead* Moss print from the Society's Charity Print Program, with framing donated by Apple Barn Gallery. The raffle raised \$3,000, which the Chapter donated to the Botetourt Free Clinic. The lucky winner was Gwen Lindsey.

Total raised for charity in these chapter reports is over \$34,713.65. Amazing!

Chapters Activities *(cont.)*

The Chapter also held its annual picnic and silent auction. Members donated new and gently used items for the silent auction and bid on them. The proceeds of this event help support projects throughout the year. Members collected soup and crackers for a local Soup for Seniors organization and also collected needed items for the Botetourt Food Pantry. Members donated paper products and food items, and a Chapter donation of \$300 was used to purchase staples such as beans, rice, and pasta in bulk. Members also donated needed items to the Rescue Mission. The items were chosen from a list of needs from the Mission, including toiletries, paper products, etc. Several times a year, Moss in the Country prepares and serves dinner for the guests at Ronald McDonald House in Roanoke. The guests there are families of children from out of the area who are patients at Carilion Roanoke Memorial Hospital.

The Chapter also donated \$150 to the Botetourt Resource Center and \$50 each to the After Prom Parties of Lord Botetourt High School and James River High School.

MOSS PELICANS Chapter (St. Petersburg, FL) conducted its raffle of a quilted wall hanging created around one of Pat's hand-painted centerpieces in November. The raffle raised \$800, with half going to the P. Buckley Moss Foundation for Children's Education and the other half going to a local charity that will be selected during the Chapter's January, 2013, meeting. The quilt was made by chapter members Ruth Zilhaver and Pat Moss herself.

Chapter members continue to collect aluminum pop tops for the St. Joseph's Children's Hospital in Tampa, FL. The Chapter also provided numerous articles of gently used and new clothing for the Clothes for Kids Project in St. Petersburg and supported the five divisions of the St. Petersburg Free Clinic with donations of food and

clothing throughout the year. Members also collected books and magazines for patients at the St. Petersburg Veterans Administration Medical Center and gave a \$100 scholarship to Kendall Burkett, a senior at Florida State University who is entering her graduate program in special education. Kendall, who was diagnosed with dyslexia and decoding problems at the age of seven, was sponsored by the Chapter as an applicant for the Judy Cary Leadership Memorial Scholarship.

MOSS ROSES Chapter (York, PA) assisted the Margaret E. Moul Foundation in obtaining a *Pigeon Forge Mill* Moss print from the Society's Charity Print Program to include in a silent auction during its 25th Anniversary & Recognition Dinner. The print raised \$185 for the Foundation's Endowment Fund. The Framers of York, PA, donated a \$25 gift certificate to go toward having the print framed. The Chapter also donated an additional \$100 to the Margaret Moul Home, \$200 to Leg Up Farm, and \$150 to Our Daily Bread.

MOSSAPHILE Chapter (Atlanta, GA) members collected canned and non-perishable food for their local food bank and items for Snax Pax (bags given out on Friday afternoons to children who may not have food on weekends; bags include fruit, juice boxes, cereal bars, etc.). Chapter members also donated clothing, coats, hats, gloves, blankets, linens, household items, small furniture, TV, etc., to American Kidney. In addition, members donated cash and/or care package items to a local church that sends care packages to soldiers overseas and made monetary donations to the P. Buckley Moss Foundation for Children's Education in support of its various programs and to the Alzheimer's Association.

TREES OF LIFE Chapter (Defiance, OH) members raised funds to benefit Jackson Fortman and his family (six-year-old and his mother both suffer from vascular malformation). Funds were raised by holding "Defiance Has Talent and Heart II", an evening event held at the Defiance K of C Hall and emceed by their local radio personality. The evening included an extensive hors d'oeuvre buffet and talent presentations by fifteen outstanding singers and dancers. Guests then "voted" by placing money in performers' buckets to see who could raise the most. The top three were announced at the end of the evening. The Chapter also held a 50/50 raffle, a silent auction of 39 items, and live auctions of a Moss original and a piece of framed student artwork. The Chapter also did an October Calendar with a prize given each day (Moss prints, brooches, Vera Bradley items, gift baskets, gift cards, etc.), held gift raffles at chapter meetings, and saved grocery receipts. The total amount raised was \$17,400.

In addition, chapter members supported PATH (homeless center) by participating in its Fun-d Calendar in February, and some members participated in the American Cancer Society's Relay for Life.



Members of the Fortman Family at "Defiance Has Talent and Heart II", sponsored by the Trees of Life Chapter. Note the original angel sketch donated by P. Buckley Moss that was auctioned that evening.

2013 Contacts for Chapters

MOSS PELICANS -ACTIVE	PRESIDENT		blbinnig@yahoo.com
Bonnie-Lou Binnig	727-786-1960	112 Hunter Ct	Palm Harbor, FL 34684
MOSSAPHILE -ACTIVE	PRESIDENT		
Lindsay Svetlay	770-939-4446	3726 Allsborough Dr	Tucker, Ga 30084-2403
HEART OF IOWA -ACTIVE	PRESIDENT		jjamfah@mchsi.com
Judith Amfah	515-292-9433	2008 Pinehurst Dr	Ames, Ia 50010
MOSS HEAVEN -ACTIVE	PRESIDENT		karen61ronne@iowatelecom.net
Karen Holt	641-472-4014	2291 Walton Lake Drive	Fairfield, Ia 52556
MOSS COUNTRY FRIENDS -ACTIVE	PRESIDENT		ranbrenneman@netins.net
Nancy Brenneman	319-646-6798	P O Box 295	Wellman Ia 52356-0295
CENTRAL IOWA -ACTIVE	PRESIDENT		sandyschel66@yahoo.com
Sandra Sheldon	515-278-0178	5516 Nw 64th Pl	Johnston, Ia 50131-1121
PB.'S PALS -ACTIVE	PRESIDENT		
Connie Murphy	618-345-8831	1973 Maple Leaf Dr	Collinsville, Il 62234-5268
PAT'S HAPPY HOOSIERS -ACTIVE	PRESIDENT		michelleball22@yahoo.com
Michelle Ball	260-229-1430	330 West 400 North	Columbia City, In 46725-9571
PAT'S FRIENDS -ACTIVE	PRESIDENT		barbdouvier@comcast.net
Barbara Douvier	651-738-0268	6096 Birchwood Rd	Woodbury, Mn 55125
ESSENCE OF MOSS -ACTIVE	PRESIDENT		rollandac@aol.com
Catherine Rolland	330-757-0920	6771 Katahdin Dr	Poland, Oh 44514-2166
FRIENDS MEETING -ACTIVE	PRESIDENT		erswjs@gmail.com
Wilma Stafford	937-426-0194	3667 Shakertown Rd	Beavercreek, Oh 45430-1424
TREES OF LIFE -ACTIVE	PRESIDENT		weisg@embarqmail.com
Deb Weisgerber	419-782-4311	1051 Wayne Ave	Defiance, Oh 43512
APPLESEEDS OF MOSS -ACTIVE	PRESIDENT		csdarrah@gmail.com
Christine Darrah	937-539-1809	201 Evergreen Dr	Bellefontaine, Oh 43311-9643
LAKE MARBURG MOSS -ACTIVE	PRESIDENT		mimito4@comcast.net
Sally Ann Gobrecht	717-632-3318	5160 Grandview Rd	Hanover, Pa 17331
THREE RIVERS MOSS -ACTIVE	PRESIDENT		lilmac@zoominternet.net
Claudia Mc Clelland	724-382-1053	143 Oakview Drive	Cranberry Twnshp, Pa 16066
PAT'S ANGELS -ACTIVE	PRESIDENT		lorrietop@comcast.net
Lorrie Topolin	215-862-3202	1 Middle Rd	New Hope, PA 18938-1101
MOSS IN THE FOREST -ACTIVE	PRESIDENT		mpteach@verizon.net
Marie Pearson	434-525-7615	114 Shady Oak Ln	Forest, Va 24551-1100
MOSS IN THE NEW RIVER VALLEY -ACTIVE	PRESIDENT		
Mary Kay White	276-228-8212	435 S Sixth St	Wytheville, Va 24382
MOSS AT MONTICELLO -ACTIVE	PRESIDENT		wedrag2@embarqmail.com
Terri Meeks	434-973-6298	P O B 321	Free Union, Va 22940
MOSS AT THE LAKE -ACTIVE	PRESIDENT		
Evelyn Cundiff	540-721-3490	310 Key Lakewood Dr	Moneta, Va 24121
MOSS IN THE COUNTRY -ACTIVE	PRESIDENT		maggieangell@cox.net
Maggie Angell	540-977-5408	2068 Wesvan Dr	Roanoke, VA 24012-6835
PAT'S CATS -ACTIVE	PRESIDENT		jniferg@comcast.net
Jennifer Gregory	276-656-1528	1528 Mulberry Rd	Martinsville, VA 24112
MOSS IN THE MOUNTAINS -ACTIVE	PRESIDENT		amccall@4seasonswireless.net
Angela Mc Call 7	276-322-2007	Fairlane Dr	Bluefield, Va 24605
MOSS IN THE VALLEY -ACTIVE	PRESIDENT		lmarkham105@yahoo.com
Linda Markham	540-389-4207	1709 Sawgrass Court	Salem, Va 24153
MOSS ON THE JAMES -ACTIVE	PRESIDENT		ahmain98@yahoo.com
Barbara Dyke	804-798-6719	13493 Ashland Rd	Ashland, Va 23005-7508
MOSS ON THE CHESAPEAKE -ACTIVE	PRESIDENT		drlwilson@verizon.net
Dr. Linda Wilson	952 804-725-0219	P.O. Box	Mathews Va 23109
PAT'S BLUE GOOSE -ACTIVE	PRESIDENT		budnshirlw4@ntelos.net
Shirley Collins	540-872-0294	20 Elk Ct	Mineral Va 23117
DAUGHTER OF THE STARS -ACTIVE	PRESIDENT		jbdovel@shentel.net
Jeannette Dovel	540-465-2297	176 Maynard Lane	Strasburg Va 22657



P. BUCKLEY MOSS SOCIETY NEW MEMBERSHIP APPLICATION

Please use this form for new memberships only.

The Moss Society performs charity work on behalf of the artist, focusing on children's charities. The box on the right should list the information on the Society member who will receive credit for recruiting you. Please add \$5 a year for foreign members.

RECRUITER INFORMATION	
Recruiter Name:	_____
Recruiter Membership #:	_____

CHECK ONE: _____ Classic \$38 _____ Senior Classic \$33 (65 and older)
 _____ Choice \$85 _____ Senior Choice \$80
 _____ Premier \$100 _____ Season Premier \$95
 _____ Premier Gold \$500 _____ Junior \$28 (17 and under)

Name of Member: _____ Date: _____

Address: _____

City: _____ State: _____ Zip: _____

_____ Please donate \$1 of my membership dues to the Foundation. _____ No, thank you.

Telephone: (_____) _____

Email: _____

Sex (circle one): M F

Junior Birth Date: ____/____/____
 Mo Day Yr

PAYMENT TYPE: Check | Credit Card
(Please circle one.)

VISA/MC/Discover No: _____ Exp. Date: _____

Signature: _____

Check No: _____ TOTAL \$: _____

For new memberships only; if you wish to renew, please use the form on the back.

Please send payment and this form to:
P. Buckley Moss Society
74 Poplar Grove Lane
Mathews, VA 23109

Tele: (804) 725-7378 ~ Fax: (804) 725-3040
Email: society@mosssociety.org
Website: www.mosssociety.org



Moss Society Wine Glasses

This handsome set of four P. Buckley Moss Society wine glasses comes with one of four favorite P. Buckley Moss images printed on the front; horses, cats, geese, and a Moss tree. These will make wonderful gifts!



The cost is \$40 plus \$8 shipping, and tax if applicable. Wine Glasses can only be ordered by Society members. Please include check for \$48 for each set ordered; Virginia residents please include sales tax of \$2 per set. You may also pay with credit card if desired. Send this form with payment to the address below or call to order.

Quantity desired: _____ sets Membership Number: _____

Name: _____ Address: _____

City: _____ State: _____ Zip: _____

Credit Card #: _____ Expiration: _____

Send form to: P. Buckley Moss Society, 74 Poplar Grove Lane, Mathews, VA 23109, (800) 430-1320.

